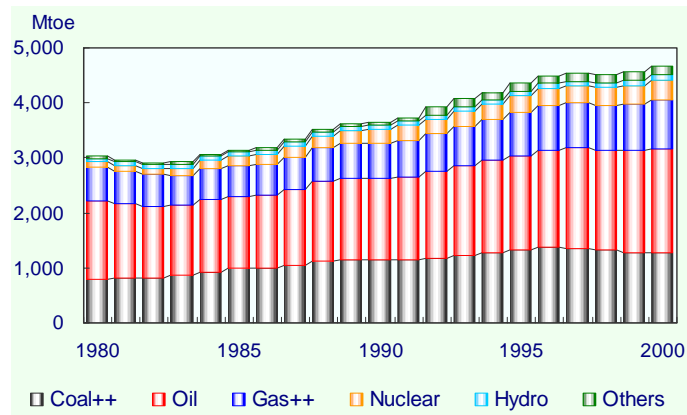


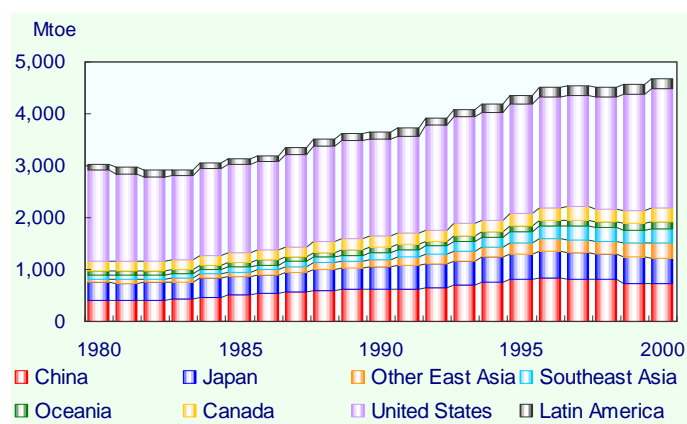
Total Primary Energy Supply by Energy APEC 19



	Mtoe					
	1980	1990	1995	1998	1999	2000
Coal++	800	1,140	1,328	1,338	1,272	1,278
Oil	1,425	1,496	1,710	1,811	1,865	1,894
Gas++	604	638	785	807	846	893
Nuclear	99	242	307	317	333	344
Hydro	65	79	92	95	94	94
Others	35	51	132	145	162	162
Total	3,029	3,646	4,353	4,514	4,573	4,665

	Share (%)					
	1980	1990	1995	1998	1999	2000
Coal++	26.4	31.3	30.5	29.6	27.8	27.4
Oil	47.0	41.0	39.3	40.1	40.8	40.6
Gas++	20.0	17.5	18.0	17.9	18.5	19.1
Nuclear	3.3	6.6	7.0	7.0	7.3	7.4
Hydro	2.2	2.2	2.1	2.1	2.1	2.0
Others	1.1	1.4	3.0	3.2	3.6	3.5

Total Primary Energy Supply by Region APEC 19

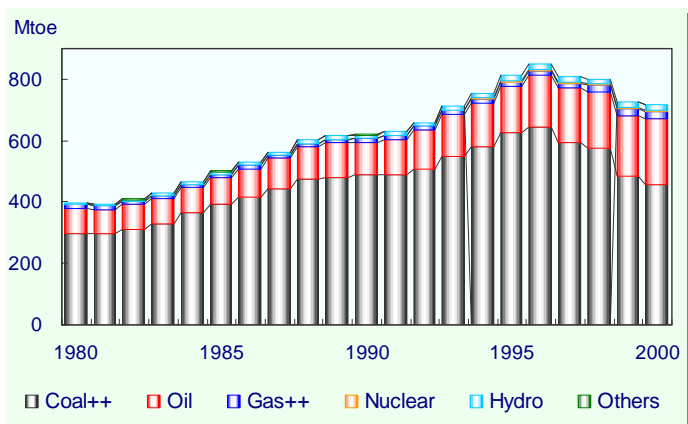


	Mtoe					
	1980	1990	1995	1998	1999	2000
China	400	621	811	801	725	718
Japan	353	433	491	499	511	509
Other East Asia	67	142	219	247	267	280
Southeast Asia	72	134	216	253	253	278
Oceania	79	103	113	122	126	130
Canada	194	206	241	244	255	264
United States	1,749	1,864	2,105	2,171	2,254	2,296
Latin America	116	144	158	177	181	190
APEC 19	3,029	3,646	4,353	4,514	4,573	4,665

	Share (%)					
	1980	1990	1995	1998	1999	2000
China	13.2	17.0	18.6	17.7	15.8	15.4
Japan	11.6	11.9	11.3	11.1	11.2	10.9
Other East Asia	2.2	3.9	5.0	5.5	5.8	6.0
Southeast Asia	2.4	3.7	5.0	5.6	5.5	6.0
Oceania	2.6	2.8	2.6	2.7	2.8	2.8
Canada	6.4	5.6	5.5	5.4	5.6	5.6
United States	57.7	51.1	48.3	48.1	49.3	49.2
Latin America	3.8	4.0	3.6	3.9	4.0	4.1

Primary Energy Supply

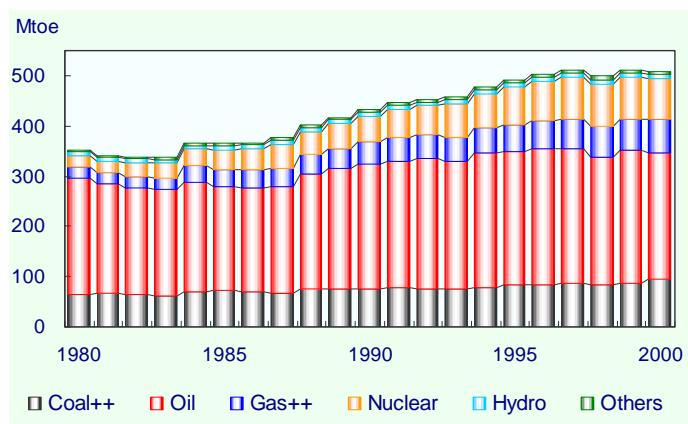
Total Primary Energy Supply by Energy China



	Mtoe					
	1980	1990	1995	1998	1999	2000
Coal++	297	487	626	575	484	458
Oil	84	109	150	185	198	214
Gas++	12.0	12.8	15.0	19.5	21.1	22.8
Nuclear	-	-	3.3	3.7	3.9	4.4
Hydro	5.1	10.9	16.4	17.9	17.5	19.1
Others	1.9	2.3	-0.5	-0.6	0.3	0.1
Total	400	621	811	801	725	718

	Share (%)					
	1980	1990	1995	1998	1999	2000
Coal++	74.4	78.3	77.2	71.8	66.8	63.7
Oil	20.9	17.5	18.5	23.1	27.3	29.8
Gas++	3.0	2.1	1.9	2.4	2.9	3.2
Nuclear	-	-	0.4	0.5	0.5	0.6
Hydro	1.3	1.8	2.0	2.2	2.4	2.7
Others	0.5	0.4	-0.1	-0.1	0.0	0.0

Total Primary Energy Supply by Energy Japan

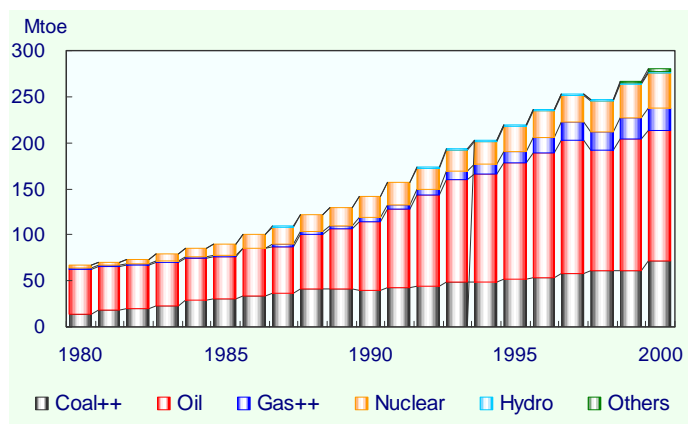


	Mtoe					
	1980	1990	1995	1998	1999	2000
Coal++	63.6	75.6	82.8	85.0	87.8	94.3
Oil	234	249	267	254	264	253
Gas++	21.8	43.5	52.0	59.7	62.3	64.7
Nuclear	21.5	51.0	75.0	85.3	82.8	83.3
Hydro	7.8	7.8	7.1	8.6	7.6	7.5
Others	4.3	5.5	6.4	6.8	6.6	6.7
Total	353	433	491	499	511	509

	Share (%)					
	1980	1990	1995	1998	1999	2000
Coal++	18.0	17.5	16.9	17.0	17.2	18.5
Oil	66.3	57.6	54.5	50.8	51.7	49.7
Gas++	6.2	10.1	10.6	12.0	12.2	12.7
Nuclear	6.1	11.8	15.3	17.1	16.2	16.4
Hydro	2.2	1.8	1.5	1.7	1.5	1.5
Others	1.2	1.3	1.3	1.4	1.3	1.3

Primary Energy Supply

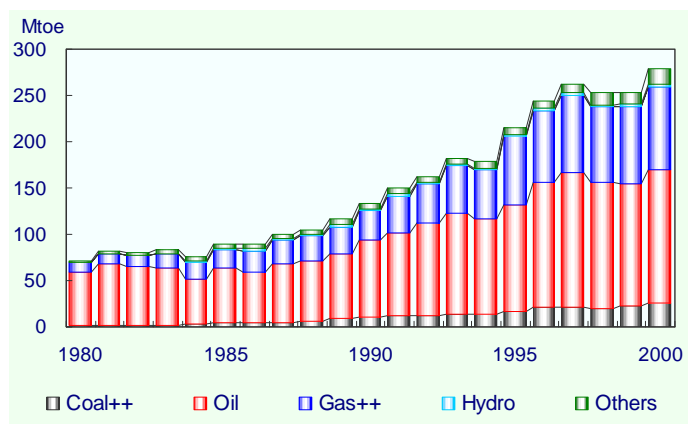
Total Primary Energy Supply by Energy Other East Asia



	Mtoe					
	1980	1990	1995	1998	1999	2000
Coal++	14.1	39.3	51.4	60.6	61.5	71.9
Oil	47.9	75.5	127.4	131.8	142.2	141.0
Gas++	1.4	4.3	12.0	19.8	22.6	24.6
Nuclear	3.1	22.3	26.7	33.0	36.9	38.4
Hydro	0.3	0.8	1.2	1.4	1.3	1.2
Others	-0.0	-0.2	0.5	0.6	2.6	2.9
Total	66.6	142.0	219.1	247.2	267.1	280.1

	Share (%)					
	1980	1990	1995	1998	1999	2000
Coal++	21.1	27.7	23.5	24.5	23.0	25.7
Oil	71.9	53.2	58.1	53.3	53.2	50.3
Gas++	2.1	3.0	5.5	8.0	8.5	8.8
Nuclear	4.6	15.7	12.2	13.3	13.8	13.7
Hydro	0.4	0.5	0.6	0.6	0.5	0.4
Others	-0.0	-0.1	0.2	0.2	1.0	1.0

Total Primary Energy Supply by Energy Southeast Asia

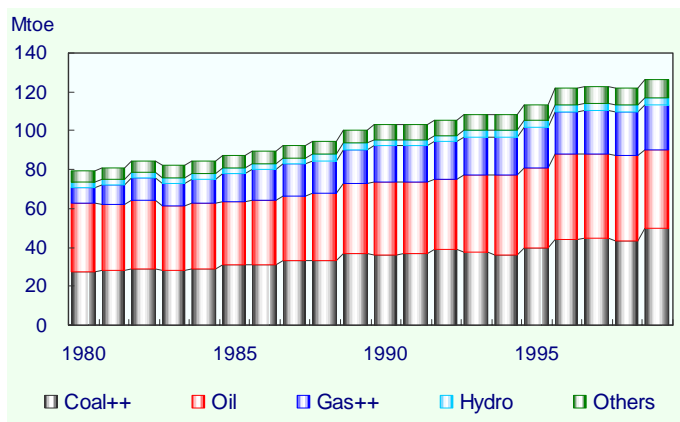


	Mtoe					
	1980	1990	1995	1998	1999	2000
Coal++	0.9	10.3	16.6	19.9	23.4	25.2
Oil	58.3	84.2	115.9	135.7	130.4	144.5
Gas++	9.9	31.4	73.0	81.7	84.1	89.4
Nuclear	-	-	-	-	-	-
Hydro	0.9	2.2	2.8	2.5	2.7	2.7
Others	1.9	5.7	7.5	13.2	12.8	16.4
Total	71.9	133.7	215.8	252.9	253.4	278.1

	Share (%)					
	1980	1990	1995	1998	1999	2000
Coal++	1.3	7.7	7.7	7.9	9.2	9.1
Oil	81.1	62.9	53.7	53.7	51.5	52.0
Gas++	13.8	23.5	33.8	32.3	33.2	32.1
Nuclear	-	-	-	-	-	-
Hydro	1.2	1.7	1.3	1.0	1.1	1.0
Others	2.6	4.3	3.5	5.2	5.1	5.9

Primary Energy Supply

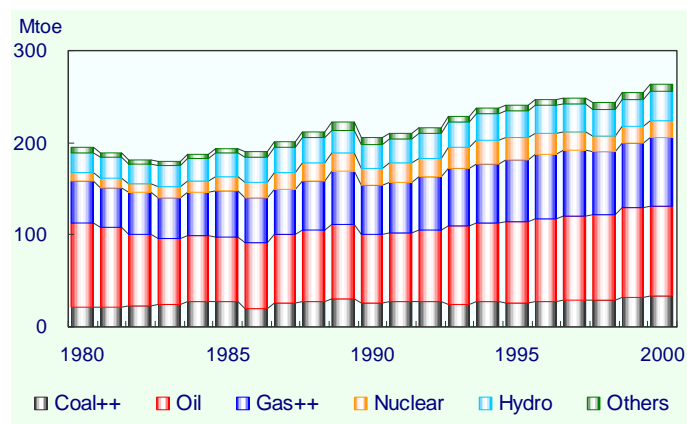
Total Primary Energy Supply by Energy Oceania



	Mtoe					
	1980	1990	1995	1998	1999	2000
Coal++	27.5	36.3	40.0	43.7	49.5	49.1
Oil	34.9	37.2	40.7	43.3	40.6	42.7
Gas++	8.6	18.8	20.8	22.7	23.3	24.7
Nuclear	-	-	-	-	-	-
Hydro	2.9	3.3	3.8	3.6	3.5	3.6
Others	5.5	7.4	8.0	9.0	9.3	10.0
Total	79.4	103.0	113.3	122.3	126.2	130.1

	Share (%)					
	1980	1990	1995	1998	1999	2000
Coal++	34.7	35.3	35.3	35.7	39.2	37.7
Oil	44.0	36.1	35.9	35.4	32.2	32.8
Gas++	10.8	18.2	18.4	18.6	18.5	19.0
Nuclear	-	-	-	-	-	-
Hydro	3.6	3.2	3.4	2.9	2.8	2.8
Others	7.0	7.2	7.1	7.4	7.4	7.7

Total Primary Energy Supply by Energy Canada

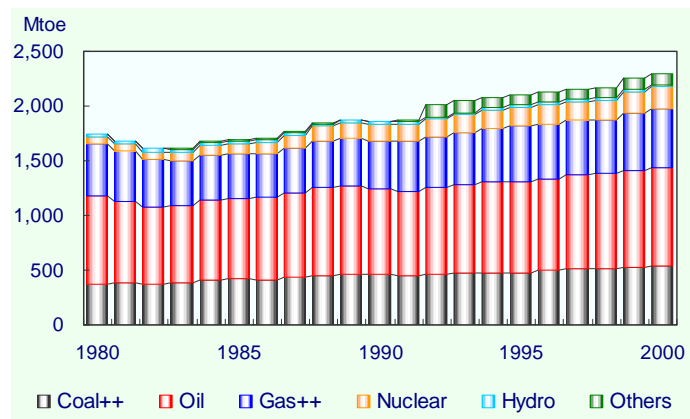


	Mtoe					
	1980	1990	1995	1998	1999	2000
Coal++	21.3	26.3	26.5	29.3	32.5	33.4
Oil	90.9	73.8	88.0	92.8	96.6	97.1
Gas++	45.9	54.3	67.1	68.1	70.0	75.2
Nuclear	9.4	17.9	24.1	17.6	18.1	19.0
Hydro	21.8	25.5	28.9	28.6	29.4	30.8
Others	5.1	8.1	6.7	7.8	8.4	8.1
Total	194.2	206.0	241.2	244.1	254.9	263.5

	Share (%)					
	1980	1990	1995	1998	1999	2000
Coal++	11.0	12.8	11.0	12.0	12.7	12.7
Oil	46.8	35.8	36.5	38.0	37.9	36.8
Gas++	23.6	26.4	27.8	27.9	27.5	28.5
Nuclear	4.8	8.7	10.0	7.2	7.1	7.2
Hydro	11.2	12.4	12.0	11.7	11.5	11.7
Others	2.6	3.9	2.8	3.2	3.3	3.1

Primary Energy Supply

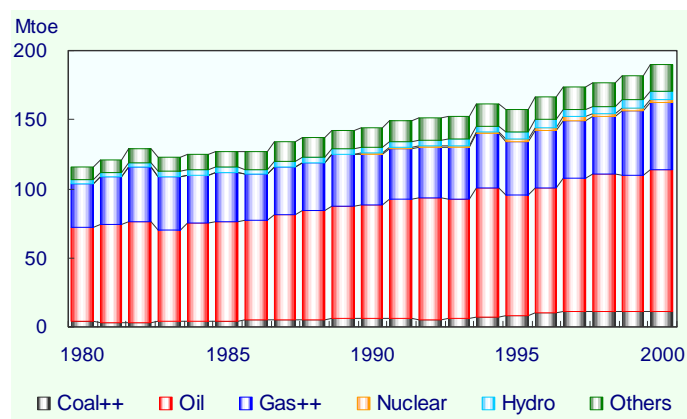
Total Primary Energy Supply by Energy United States of America



	Mtoe					
	1980	1990	1995	1998	1999	2000
Coal++	372	459	476	513	522	536
Oil	808	786	833	869	894	899
Gas++	473	435	506	495	517	543
Nuclear	65.4	150	175	176	189	196
Hydro	24.0	24.3	26.5	27.4	26.9	23.5
Others	6.3	8.1	87.6	91.4	105.3	98.4
Total	1,749	1,864	2,105	2,171	2,254	2,296

	Share (%)					
	1980	1990	1995	1998	1999	2000
Coal++	21.3	24.7	22.6	23.6	23.2	23.3
Oil	46.2	42.2	39.6	40.0	39.7	39.2
Gas++	27.1	23.4	24.1	22.8	22.9	23.6
Nuclear	3.7	8.1	8.3	8.1	8.4	8.6
Hydro	1.4	1.3	1.3	1.3	1.2	1.0
Others	0.4	0.4	4.2	4.2	4.7	4.3

Total Primary Energy Supply by Energy Latin America

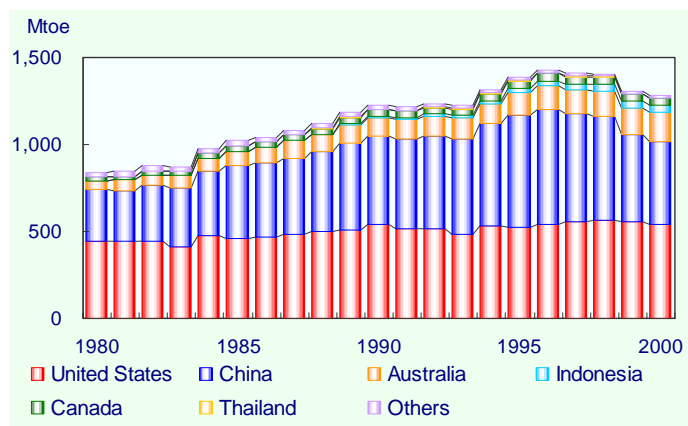


	Mtoe					
	1980	1990	1995	1998	1999	2000
Coal++	3.9	6.2	8.2	10.9	11.0	10.7
Oil	68.1	81.8	87.3	100.0	99.2	102.7
Gas++	31.5	37.3	38.7	41.4	46.0	48.6
Nuclear	-	0.8	2.2	2.4	2.6	2.1
Hydro	2.7	3.7	5.1	4.7	5.4	5.9
Others	9.8	14.5	16.2	17.2	17.2	20.0
Total	115.9	144.2	157.5	176.5	181.3	190.0

	Share (%)					
	1980	1990	1995	1998	1999	2000
Coal++	3.4	4.3	5.2	6.2	6.0	5.7
Oil	58.7	56.7	55.4	56.6	54.7	54.0
Gas++	27.2	25.9	24.6	23.4	25.4	25.6
Nuclear	-	0.5	1.4	1.4	1.4	1.1
Hydro	2.3	2.5	3.2	2.7	3.0	3.1
Others	8.4	10.1	10.3	9.7	9.5	10.5

Primary Energy Supply

Indigenous Production of Coal APEC 19

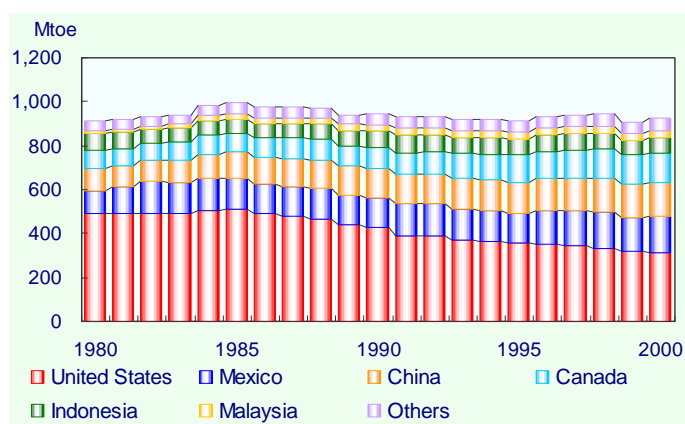


	Mtoe					
	1980	1990	1995	1998	1999	2000
United States	445	538	526	568	559	542
China	295	513	646	594	496	474
Australia	52	106	129	148	153	168
Indonesia	0.2	5.8	24.0	35.6	42.2	44.0
Canada	20.2	37.9	40.9	40.0	36.1	34.3
Thailand	0.4	3.6	5.5	6.1	5.8	5.2
Others	25.9	20.5	13.8	12.1	11.9	12.3
APEC 19	838	1,225	1,385	1,403	1,305	1,280

	Share (%)					
	1980	1990	1995	1998	1999	2000
United States	53.1	43.9	38.0	40.5	42.8	42.3
China	35.1	41.9	46.7	42.3	38.0	37.0
Australia	6.2	8.7	9.3	10.5	11.8	13.1
Indonesia	0.0	0.5	1.7	2.5	3.2	3.4
Canada	2.4	3.1	2.9	2.8	2.8	2.7
Thailand	0.0	0.3	0.4	0.4	0.4	0.4
Others	3.1	1.7	1.0	0.9	0.9	1.0

Coal: Hard Coal, Anthracite and Lignite

Indigenous Production of Crude Oil APEC 19

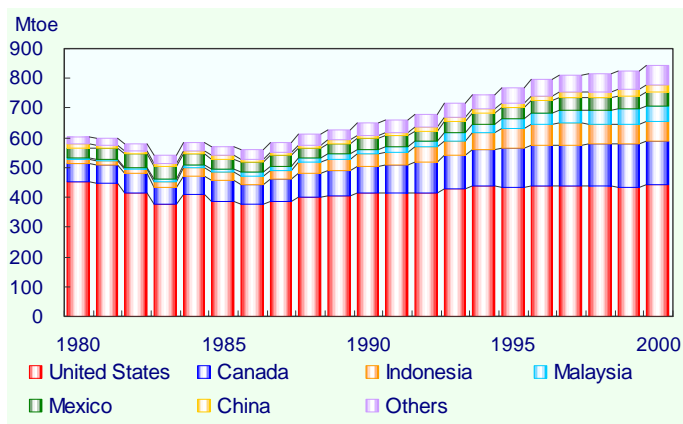


	Mtoe					
	1980	1990	1995	1998	1999	2000
United States	491	425	355	335	319	315
Mexico	103	139	136	160	155	161
China	101	132	142	153	152	155
Canada	85	100	123	135	132	136
Indonesia	77	71	73	71	66	69
Malaysia	14	31	35	36	33	31
Others	45	51	51	52	48	55
APEC 19	915	947	916	942	905	923

	Share (%)					
	1980	1990	1995	1998	1999	2000
United States	53.7	44.8	38.8	35.5	35.3	34.2
Mexico	11.2	14.6	14.9	17.0	17.1	17.5
China	11.0	13.9	15.5	16.2	16.8	16.8
Canada	9.3	10.5	13.4	14.3	14.6	14.8
Indonesia	8.4	7.5	8.0	7.6	7.3	7.5
Malaysia	1.5	3.2	3.8	3.8	3.6	3.3
Others	4.9	5.4	5.5	5.6	5.4	5.9

Crude Oil includes NGL and condensate

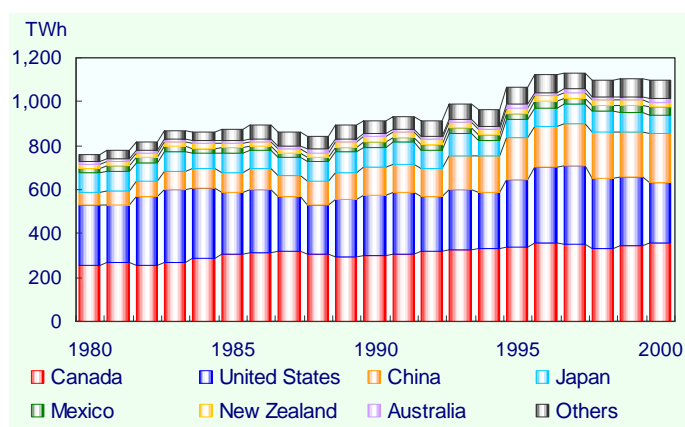
Indigenous Production of Natural Gas APEC 19



	Mtoe					
	1980	1990	1995	1998	1999	2000
United States	452	416	433	437	434	441
Canada	63.6	88.2	130	142	144	149
Indonesia	14.8	41.0	68.0	67.6	69.6	65.8
Malaysia	2.3	15.5	33.3	45.1	47.8	52.4
Mexico	35.1	35.3	36.2	44.3	44.9	44.1
China	12.0	12.8	15.0	19.5	21.1	22.8
Others	23.5	39.8	53.2	60.6	61.9	66.0
APEC 19	603	649	769	816	823	841

	Share (%)					
	1980	1990	1995	1998	1999	2000
United States	74.9	64.2	56.3	53.6	52.7	52.5
Canada	10.6	13.6	16.9	17.4	17.5	17.7
Indonesia	2.5	6.3	8.8	8.3	8.5	7.8
Malaysia	0.4	2.4	4.3	5.5	5.8	6.2
Mexico	5.8	5.4	4.7	5.4	5.4	5.2
China	2.0	2.0	2.0	2.4	2.6	2.7
Others	3.9	6.1	6.9	7.4	7.5	7.8

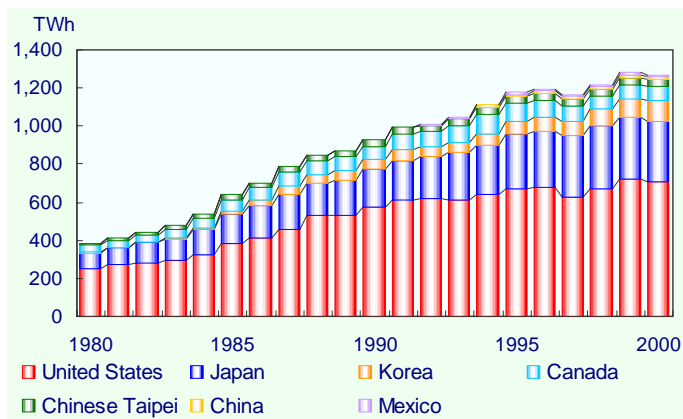
Indigenous Production of Hydro Power APEC 19



	TWh					
	1980	1990	1995	1998	1999	2000
Canada	253.2	296.8	336.0	332.0	345.6	358.4
United States	276.0	279.9	308.4	318.9	313.4	273.1
China	59.2	126.7	190.6	208.0	203.8	222.4
Japan	91.0	91.0	82.8	99.6	88.4	87.0
Mexico	16.7	23.3	27.5	24.7	32.7	33.1
New Zealand	19.2	23.0	27.3	24.1	23.2	24.0
Australia	13.8	14.9	16.2	16.1	16.8	17.1
Others	29.2	59.6	78.9	76.1	77.9	81.1
APEC 19	758.4	915.3	1,067.8	1,099.5	1,101.8	1,096.3

	Share (%)					
	1980	1990	1995	1998	1999	2000
Canada	33.4	32.4	31.5	30.2	31.4	32.7
United States	36.4	30.6	28.9	29.0	28.4	24.9
China	7.8	13.8	17.8	18.9	18.5	20.3
Japan	12.0	9.9	7.8	9.1	8.0	7.9
Mexico	2.2	2.5	2.6	2.2	3.0	3.0
New Zealand	2.5	2.5	2.6	2.2	2.1	2.2
Australia	1.8	1.6	1.5	1.5	1.5	1.6
Others	3.9	6.5	7.4	6.9	7.1	7.4

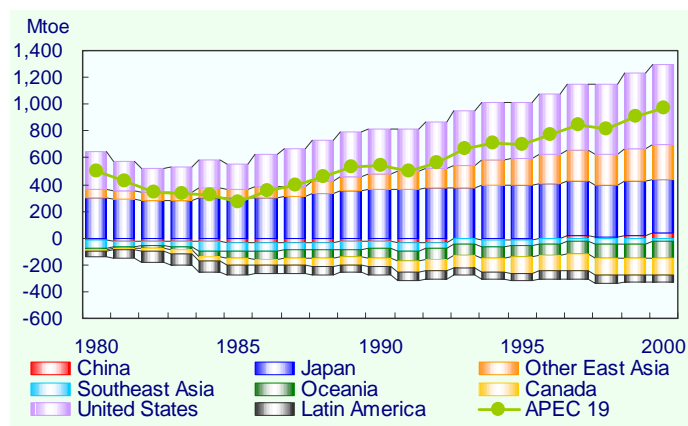
Indigenous Production of Nuclear Power APEC 19



	TWh					
	1980	1990	1995	1998	1999	2000
United States	251.1	576.9	673.4	673.7	725.0	705.4
Japan	82.6	195.8	286.9	327.3	317.7	319.8
Korea	3.5	52.9	67.0	89.7	103.1	109.0
Canada	35.9	68.8	92.3	67.5	69.3	72.8
Chinese Taipei	8.2	32.9	35.3	36.8	38.4	38.5
China	-	-	12.8	14.1	14.9	16.7
Mexico	-	2.9	8.4	9.3	10.0	8.2
Others	-	-	-	-	-	-
APEC 19	381.3	930.2	1,176.2	1,218.4	1,278.5	1,270.4

	Share (%)					
	1980	1990	1995	1998	1999	2000
United States	65.9	62.0	57.3	55.3	56.7	55.5
Japan	21.7	21.0	24.4	26.9	24.8	25.2
Korea	0.9	5.7	5.7	7.4	8.1	8.6
Canada	9.4	7.4	7.8	5.5	5.4	5.7
Chinese Taipei	2.2	3.5	3.0	3.0	3.0	3.0
China	-	-	1.1	1.2	1.2	1.3
Mexico	-	0.3	0.7	0.8	0.8	0.6
Others	-	-	-	-	-	-

Net Import by Region APEC 19



	Mtoe					
	1980	1990	1995	1998	1999	2000
Australia	-18.3	-65.3	-88.5	-107.3	-109.4	-125.0
Brunei Darussalam	-17.4	-12.9	-14.6	-13.4	-14.4	-15.3
Canada	-11.0	-68.4	-119.2	-127.8	-120.1	-124.1
Chile	4.1	7.0	10.7	14.2	17.8	17.8
China	-18.6	-29.0	-8.4	8.3	19.6	34.5
Hong Kong, China	6.0	10.8	14.3	17.7	20.3	18.2
Indonesia	-60.7	-65.9	-85.2	-91.0	-92.2	-82.4
Japan	303.2	361.6	394.0	389.4	406.7	406.9
Korea	29.6	69.5	130.8	139.0	150.6	162.7
Malaysia	-5.0	-25.9	-28.3	-26.4	-28.7	-25.8
Mexico	-46.9	-65.7	-62.9	-75.6	-71.6	-71.5
New Zealand	4.0	2.2	2.9	3.3	3.7	3.5
Papua New Guinea	0.6	-3.7	-4.0	-2.9	-3.2	-0.9
Peru	-3.0	-0.6	1.8	2.6	2.2	3.3
Philippines	10.4	11.4	16.9	18.7	19.5	20.1
Singapore	7.1	24.0	32.3	40.1	38.8	40.4
Chinese Taipei	19.4	37.0	55.7	66.3	71.3	77.5
Thailand	12.0	18.0	32.6	31.4	33.5	34.6
United States	289	335	419	532	561	595
APEC 19	504	539	700	818	905	970

Primary Energy Supply