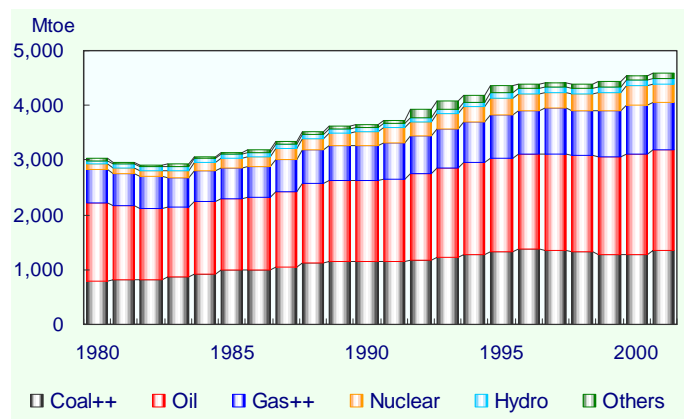


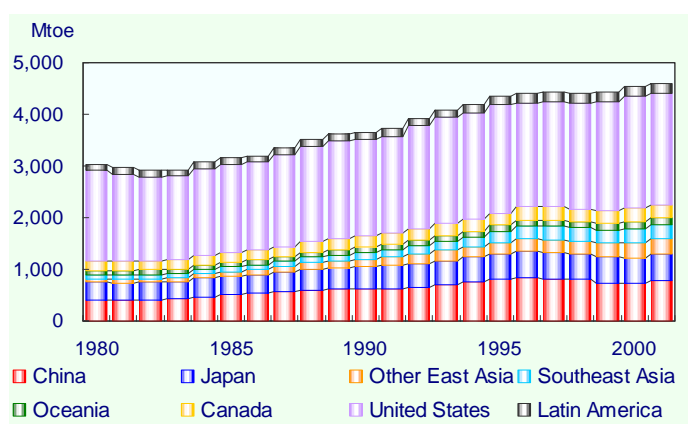
Total Primary Energy Supply by Energy APEC 19



	Mtoe					
	1980	1990	1995	1999	2000	2001
Coal++	800.2	1,139.9	1,327.9	1,263.8	1,268.3	1,342.3
Oil	1,425.7	1,497.9	1,712.5	1,799.4	1,850.2	1,836.9
Gas++	604.4	637.7	784.8	850.2	897.1	869.7
Nuclear	99.3	242.4	306.8	334.0	343.7	349.3
Hydro	65.3	78.5	91.8	94.4	94.3	91.1
Others	34.6	51.4	132.4	90.7	96.8	95.9
Total	3,029.6	3,647.8	4,356.1	4,432.5	4,550.4	4,585.4

	Share (%)					
	1980	1990	1995	1999	2000	2001
Coal++	26.4	31.2	30.5	28.5	27.9	29.3
Oil	47.1	41.1	39.3	40.6	40.7	40.1
Gas++	19.9	17.5	18.0	19.2	19.7	19.0
Nuclear	3.3	6.6	7.0	7.5	7.6	7.6
Hydro	2.2	2.2	2.1	2.1	2.1	2.0
Others	1.1	1.4	3.0	2.0	2.1	2.1

Total Primary Energy Supply by Region APEC 19

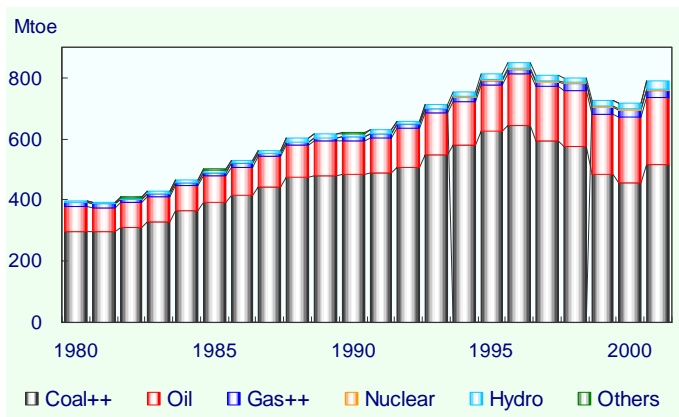


	Mtoe					
	1980	1990	1995	1999	2000	2001
China	399.6	621.3	810.9	724.7	719.1	790.0
Japan	352.6	432.6	490.8	511.1	509.2	507.6
Other East Asia	67.3	143.6	221.7	267.1	282.0	289.9
Southeast Asia	71.9	133.7	216.0	253.7	276.9	278.2
Oceania	79.4	103.0	113.3	126.2	127.5	125.0
Canada	194.2	206.0	241.2	254.9	263.5	262.3
United States	1,748.7	1,863.6	2,104.7	2,113.5	2,183.1	2,144.9
Latin America	115.9	144.3	157.5	181.3	189.2	187.5
APEC 19	3,029.6	3,647.8	4,356.1	4,432.5	4,550.4	4,585.4

	Share (%)					
	1980	1990	1995	1999	2000	2001
China	13.2	17.0	18.6	16.3	15.8	17.2
Japan	11.6	11.9	11.3	11.5	11.2	11.1
Other East Asia	2.2	3.9	5.1	6.0	6.2	6.3
Southeast Asia	2.4	3.7	5.0	5.7	6.1	6.1
Oceania	2.6	2.8	2.6	2.8	2.8	2.7
Canada	6.4	5.6	5.5	5.8	5.8	5.7
United States	57.7	51.1	48.3	47.7	48.0	46.8
Latin America	3.8	4.0	3.6	4.1	4.2	4.1

Primary Energy Supply

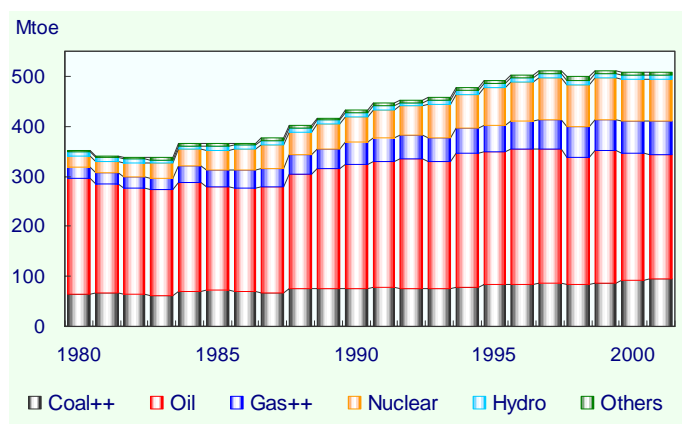
Total Primary Energy Supply by Energy China



	Mtoe					
	1980	1990	1995	1999	2000	2001
Coal++	297.2	486.5	626.2	484.2	457.5	515.5
Oil	83.6	108.7	150.3	197.6	213.9	219.3
Gas++	12.0	12.8	15.0	21.1	22.8	25.4
Nuclear	-	-	3.3	3.9	4.4	4.6
Hydro	5.1	10.9	16.4	17.5	19.1	23.9
Others	1.8	2.3	-0.5	0.3	1.4	1.4
Total	399.6	621.2	810.9	724.7	719.1	790.0

	Share (%)					
	1980	1990	1995	1999	2000	2001
Coal++	74.4	78.3	77.2	66.8	63.6	65.2
Oil	20.9	17.5	18.5	27.3	29.7	27.8
Gas++	3.0	2.1	1.9	2.9	3.2	3.2
Nuclear	-	-	0.4	0.5	0.6	0.6
Hydro	1.3	1.8	2.0	2.4	2.7	3.0
Others	0.5	0.4	-0.1	0.0	0.2	0.2

Total Primary Energy Supply by Energy Japan

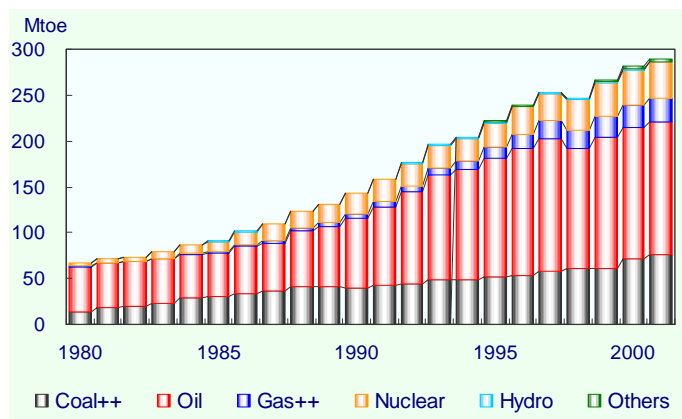


	Mtoe					
	1980	1990	1995	1999	2000	2001
Coal++	63.6	75.6	82.8	87.8	91.0	94.7
Oil	233.7	249.1	267.5	264.1	255.8	248.1
Gas++	21.7	43.5	52.0	62.3	64.9	67.3
Nuclear	21.5	51.0	75.0	82.8	83.3	83.7
Hydro	7.8	7.8	7.1	7.6	7.5	7.4
Others	4.3	5.5	6.4	6.6	6.7	6.4
Total	352.6	432.5	490.8	511.1	509.2	507.5

	Share (%)					
	1980	1990	1995	1999	2000	2001
Coal++	18.0	17.5	16.9	17.2	17.9	18.7
Oil	66.3	57.6	54.5	51.7	50.2	48.9
Gas++	6.2	10.1	10.6	12.2	12.8	13.3
Nuclear	6.1	11.8	15.3	16.2	16.4	16.5
Hydro	2.2	1.8	1.5	1.5	1.5	1.5
Others	1.2	1.3	1.3	1.3	1.3	1.3

Primary Energy Supply

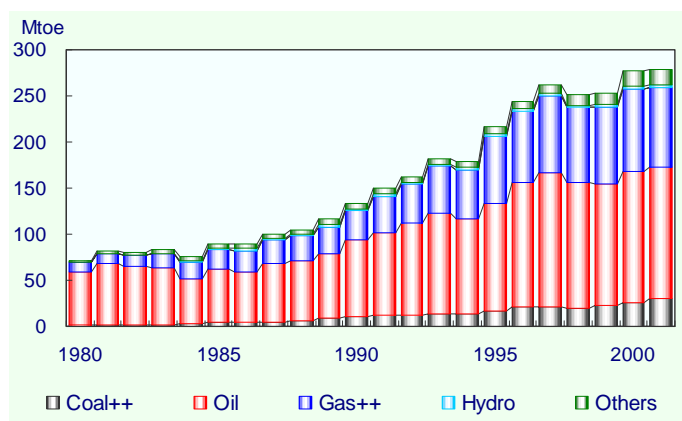
Total Primary Energy Supply by Energy Other East Asia



	Mtoe					
	1980	1990	1995	1999	2000	2001
Coal++	14.1	39.3	51.4	61.5	71.9	76.2
Oil	48.6	77.0	129.9	142.2	142.9	144.1
Gas++	1.4	4.3	11.9	22.6	24.6	26.8
Nuclear	3.0	22.3	26.7	36.9	38.4	38.5
Hydro	0.3	0.8	1.2	1.3	1.2	1.1
Others	-0.0	-0.2	0.5	2.6	2.9	3.2
Total	67.3	143.6	221.7	267.1	281.9	289.9

	Share (%)					
	1980	1990	1995	1999	2000	2001
Coal++	20.9	27.4	23.2	23.0	25.5	26.3
Oil	72.2	53.7	58.6	53.2	50.7	49.7
Gas++	2.1	3.0	5.4	8.5	8.7	9.2
Nuclear	4.5	15.6	12.0	13.8	13.6	13.3
Hydro	0.4	0.5	0.6	0.5	0.4	0.4
Others	-0.0	-0.1	0.2	1.0	1.0	1.1

Total Primary Energy Supply by Energy Southeast Asia

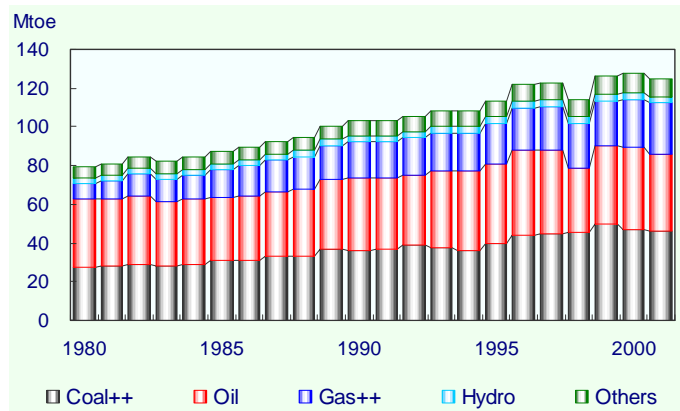


	Mtoe					
	1980	1990	1995	1999	2000	2001
Coal++	0.9	10.2	16.6	23.4	25.2	30.9
Oil	58.3	84.1	116.1	130.7	143.3	141.8
Gas++	9.9	31.4	73.0	84.1	89.4	86.6
Nuclear	-	-	-	-	-	-
Hydro	0.9	2.2	2.8	2.7	2.6	2.7
Others	1.9	5.7	7.5	12.8	16.3	16.1
Total	71.8	133.7	216.0	253.7	276.9	278.2

	Share (%)					
	1980	1990	1995	1999	2000	2001
Coal++	1.3	7.7	7.7	9.2	9.1	11.1
Oil	81.1	62.9	53.8	51.5	51.8	51.0
Gas++	13.8	23.5	33.8	33.1	32.3	31.1
Nuclear	-	-	-	-	-	-
Hydro	1.2	1.7	1.3	1.1	1.0	1.0
Others	2.6	4.3	3.5	5.0	5.9	5.8

Primary Energy Supply

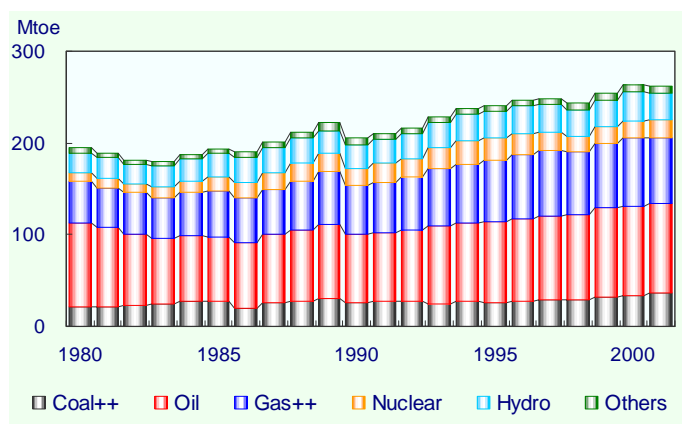
Total Primary Energy Supply by Energy Oceania



	Mtoe					
	1980	1990	1995	1999	2000	2001
Coal++	27.5	36.3	40.0	49.5	47.2	46.4
Oil	34.9	37.2	40.7	40.6	42.1	39.5
Gas++	8.6	18.8	20.8	23.3	25.0	26.4
Nuclear	-	-	-	-	-	-
Hydro	2.9	3.3	3.8	3.5	3.6	3.4
Others	5.5	7.4	8.0	9.3	9.5	9.2
Total	79.4	103.0	113.3	126.2	127.5	125.0

	Share (%)					
	1980	1990	1995	1999	2000	2001
Coal++	34.7	35.3	35.3	39.2	37.1	37.1
Oil	44.0	36.1	35.9	32.2	33.0	31.6
Gas++	10.8	18.2	18.4	18.5	19.6	21.1
Nuclear	-	-	-	-	-	-
Hydro	3.6	3.2	3.4	2.8	2.8	2.7
Others	7.0	7.2	7.1	7.4	7.5	7.4

Total Primary Energy Supply by Energy Canada

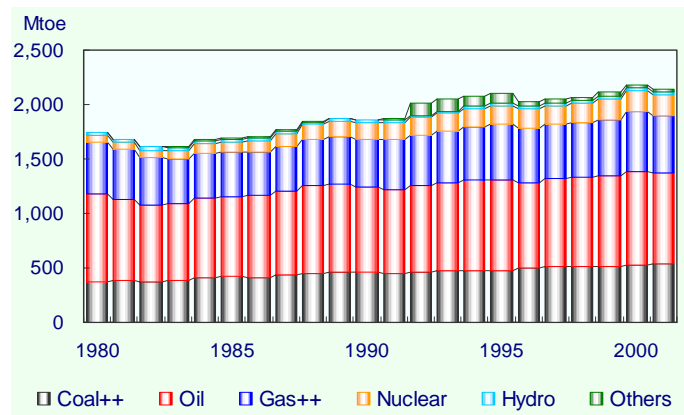


	Mtoe					
	1980	1990	1995	1999	2000	2001
Coal++	21.3	26.3	26.5	32.5	33.4	35.9
Oil	90.9	73.8	88.0	96.5	97.1	97.6
Gas++	45.9	54.3	67.1	70.0	75.2	71.7
Nuclear	9.3	17.9	24.1	18.1	19.0	20.0
Hydro	21.8	25.5	28.9	29.4	30.8	28.6
Others	5.1	8.1	6.7	8.4	8.1	8.5
Total	194.2	206.0	241.2	254.9	263.5	262.3

	Share (%)					
	1980	1990	1995	1999	2000	2001
Coal++	11.0	12.8	11.0	12.8	12.7	13.7
Oil	46.8	35.8	36.5	37.9	36.8	37.2
Gas++	23.6	26.4	27.8	27.5	28.5	27.3
Nuclear	4.8	8.7	10.0	7.1	7.2	7.6
Hydro	11.2	12.4	12.0	11.5	11.7	10.9
Others	2.6	3.9	2.8	3.3	3.1	3.2

Primary Energy Supply

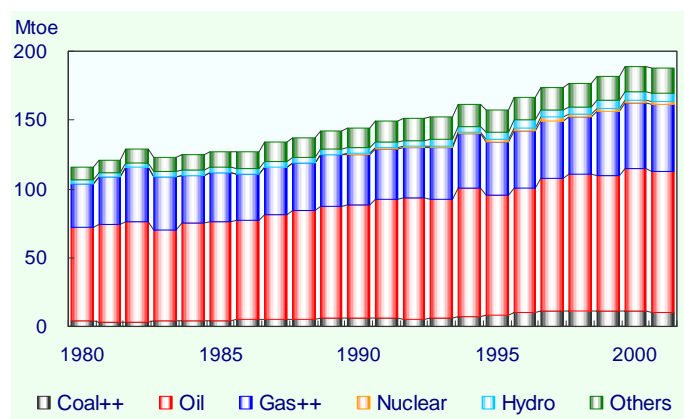
Total Primary Energy Supply by Energy United States of America



	Mtoe					
	1980	1990	1995	1999	2000	2001
Coal++	371.7	459.4	476.2	514.0	531.3	532.2
Oil	807.8	786.1	832.7	828.5	850.8	844.5
Gas++	473.4	435.4	506.3	520.7	547.5	516.4
Nuclear	65.4	150.3	175.5	189.8	196.4	200.3
Hydro	24.0	24.3	26.5	26.9	23.5	17.9
Others	6.3	8.1	87.6	33.6	33.5	33.6
Total	1,748.6	1,863.6	2,104.7	2,113.5	2,183.1	2,144.9

	Share (%)					
	1980	1990	1995	1999	2000	2001
Coal++	21.3	24.7	22.6	24.3	24.3	24.8
Oil	46.2	42.2	39.6	39.2	39.0	39.4
Gas++	27.1	23.4	24.1	24.6	25.1	24.1
Nuclear	3.7	8.1	8.3	9.0	9.0	9.3
Hydro	1.4	1.3	1.3	1.3	1.1	0.8
Others	0.4	0.4	4.2	1.6	1.5	1.6

Total Primary Energy Supply by Energy Latin America

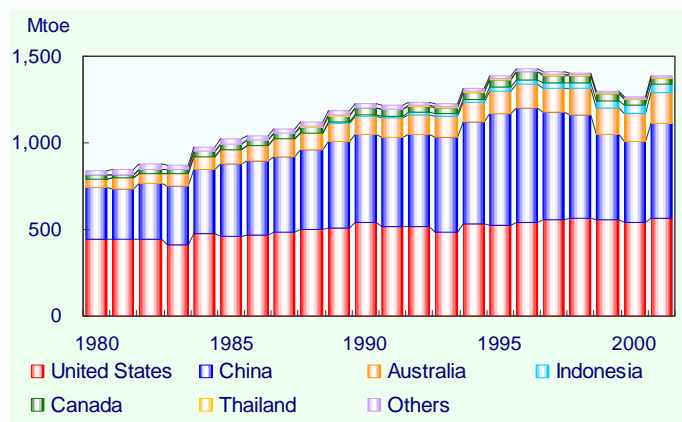


	Mtoe					
	1980	1990	1995	1999	2000	2001
Coal++	3.9	6.2	8.1	11.0	10.7	10.6
Oil	68.1	81.8	87.3	99.2	104.4	102.0
Gas++	31.5	37.3	38.7	46.0	47.7	49.0
Nuclear	-	0.8	2.2	2.6	2.1	2.3
Hydro	2.7	3.7	5.1	5.4	5.9	6.1
Others	9.8	14.5	16.2	17.2	18.4	17.5
Total	115.9	144.2	157.5	181.3	189.2	187.5

	Share (%)					
	1980	1990	1995	1999	2000	2001
Coal++	3.4	4.3	5.2	6.0	5.7	5.7
Oil	58.7	56.7	55.4	54.7	55.2	54.4
Gas++	27.2	25.9	24.6	25.4	25.2	26.1
Nuclear	-	0.5	1.4	1.4	1.1	1.2
Hydro	2.3	2.5	3.2	3.0	3.1	3.3
Others	8.4	10.1	10.3	9.5	9.7	9.3

Primary Energy Supply

Indigenous Production of Coal APEC 19

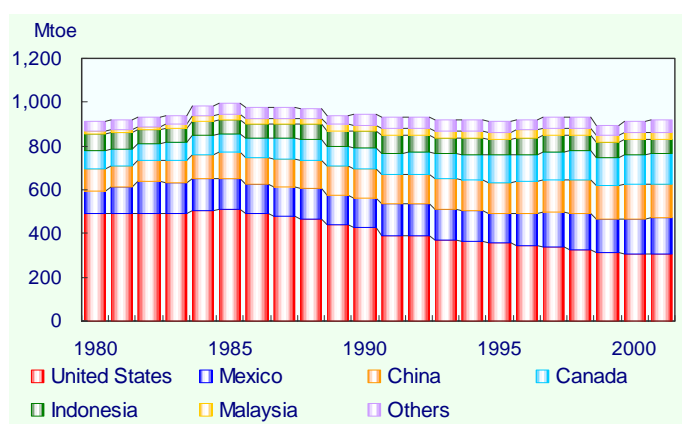


	Mtoe					
	1980	1990	1995	1999	2000	2001
United States	445.2	537.6	526.2	552.6	536.9	564.7
China	294.6	513.0	646.4	496.4	474.1	551.4
Australia	51.9	106.3	128.6	153.5	159.9	170.7
Indonesia	0.2	5.8	24.0	42.2	44.0	50.3
Canada	20.2	37.9	40.8	36.1	34.2	35.5
Thailand	0.4	3.6	5.5	5.8	5.2	5.7
Others	25.9	20.5	13.8	11.9	12.2	12.3
APEC 19	838.4	1,224.6	1,385.2	1,298.3	1,266.6	1,390.6

	Share (%)					
	1980	1990	1995	1999	2000	2001
United States	53.1	43.9	38.0	42.6	42.4	40.6
China	35.1	41.9	46.7	38.2	37.4	39.6
Australia	6.2	8.7	9.3	11.8	12.6	12.3
Indonesia	0.0	0.5	1.7	3.2	3.5	3.6
Canada	2.4	3.1	2.9	2.8	2.7	2.6
Thailand	0.0	0.3	0.4	0.4	0.4	0.4
Others	3.1	1.7	1.0	0.9	1.0	0.9

Coal: Hard Coal, Anthracite and Lignite

Indigenous Production of Crude Oil APEC 19

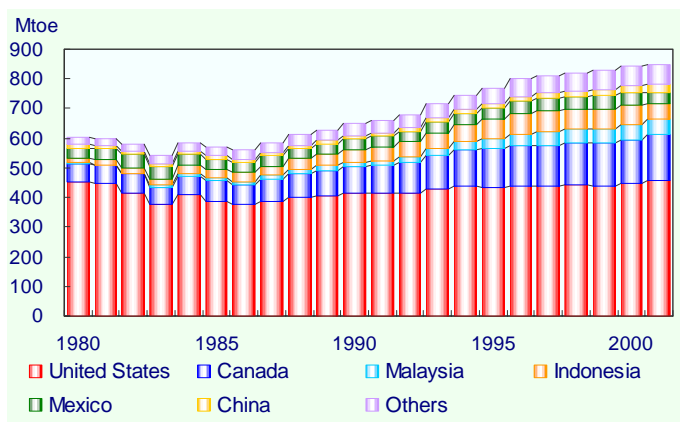


	Mtoe					
	1980	1990	1995	1999	2000	2001
United States	490.8	424.8	355.5	309.7	307.7	305.9
Mexico	102.7	138.6	136.2	154.7	161.2	166.0
China	100.7	131.5	142.3	152.0	154.9	155.8
Canada	85.3	99.7	123.0	132.1	136.4	138.3
Indonesia	76.7	70.7	72.9	65.9	69.0	62.0
Malaysia	13.7	30.6	35.1	32.8	30.8	32.9
Others	44.9	51.3	51.0	48.7	54.9	56.9
APEC 19	914.8	947.3	915.9	896.0	914.9	917.6

	Share (%)					
	1980	1990	1995	1999	2000	2001
United States	53.7	44.8	38.8	34.6	33.6	33.3
Mexico	11.2	14.6	14.9	17.3	17.6	18.1
China	11.0	13.9	15.5	17.0	16.9	17.0
Canada	9.3	10.5	13.4	14.7	14.9	15.1
Indonesia	8.4	7.5	8.0	7.4	7.5	6.8
Malaysia	1.5	3.2	3.8	3.7	3.4	3.6
Others	4.9	5.4	5.6	5.4	6.0	6.2

Crude Oil includes NGL and condensate

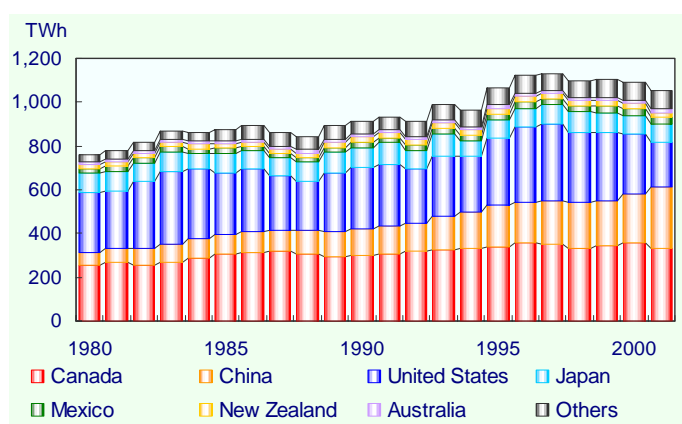
Indigenous Production of Natural Gas APEC 19



	Mtoe					
	1980	1990	1995	1999	2000	2001
United States	451.5	416.4	433.2	437.8	445.9	458.0
Canada	63.6	88.2	130.3	144.4	148.9	152.5
Malaysia	2.2	15.5	33.3	47.7	52.4	53.7
Indonesia	14.8	41.0	68.0	69.6	65.8	50.2
Mexico	35.1	35.3	36.1	44.9	43.1	41.8
China	12.0	12.8	15.0	21.1	22.8	25.4
Others	23.5	39.8	53.2	61.9	66.8	68.7
APEC 19	602.8	649.1	769.1	827.4	845.8	850.3

	Share (%)					
	1980	1990	1995	1999	2000	2001
United States	74.9	64.2	56.3	52.9	52.7	53.9
Canada	10.6	13.6	16.9	17.5	17.6	17.9
Malaysia	0.4	2.4	4.3	5.8	6.2	6.3
Indonesia	2.5	6.3	8.8	8.4	7.8	5.9
Mexico	5.8	5.4	4.7	5.4	5.1	4.9
China	2.0	2.0	2.0	2.6	2.7	3.0
Others	3.9	6.1	6.9	7.5	7.9	8.1

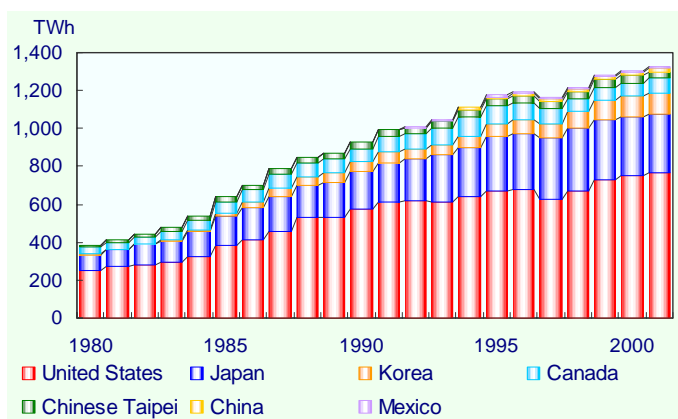
Indigenous Production of Hydro Power APEC 19



	TWh					
	1980	1990	1995	1999	2000	2001
Canada	253.2	296.8	336.0	345.6	358.4	333.1
China	59.2	126.7	190.6	203.8	222.4	277.4
United States	276.0	279.9	308.4	313.4	273.1	208.1
Japan	91.0	91.0	82.8	88.4	83.1	82.1
Mexico	16.7	23.3	27.5	32.7	33.3	28.0
New Zealand	19.2	23.0	27.3	23.2	24.6	21.6
Australia	13.8	14.9	16.2	16.8	16.4	16.8
Others	29.2	59.6	78.9	77.9	81.1	85.0
APEC 19	758.4	915.3	1,067.8	1,101.8	1,092.5	1,052.2

	Share (%)					
	1980	1990	1995	1999	2000	2001
Canada	33.4	32.4	31.5	31.4	32.8	31.7
China	7.8	13.8	17.8	18.5	20.4	26.4
United States	36.4	30.6	28.9	28.4	25.0	19.8
Japan	12.0	9.9	7.8	8.0	7.6	7.8
Mexico	2.2	2.5	2.6	3.0	3.1	2.7
New Zealand	2.5	2.5	2.6	2.1	2.3	2.1
Australia	1.8	1.6	1.5	1.5	1.5	1.6
Others	3.9	6.5	7.4	7.1	7.4	8.1

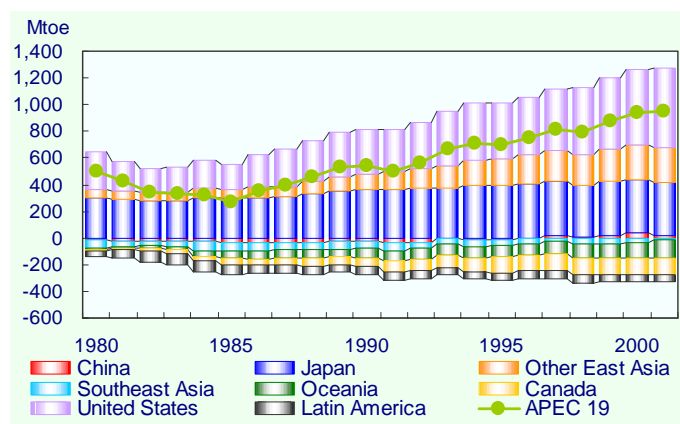
Indigenous Production of Nuclear Power APEC 19



	TWh					
	1980	1990	1995	1999	2000	2001
United States	251.1	576.9	673.4	728.3	753.9	768.8
Japan	82.6	195.8	286.9	317.7	305.5	306.8
Korea	3.5	52.9	67.0	103.1	109.0	112.1
Canada	35.9	68.8	92.3	69.3	72.8	76.7
Chinese Taipei	8.2	32.9	35.3	38.4	38.5	35.5
China	-	-	12.8	14.9	16.7	17.5
Mexico	-	2.9	8.4	10.0	8.2	8.8
Others	-	-	-	-	-	-
APEC 19	381.3	930.2	1,176.2	1,281.7	1,304.5	1,326.2

	Share (%)					
	1980	1990	1995	1999	2000	2001
United States	65.9	62.0	57.3	56.8	57.8	58.0
Japan	21.7	21.0	24.4	24.8	23.4	23.1
Korea	0.9	5.7	5.7	8.0	8.4	8.5
Canada	9.4	7.4	7.8	5.4	5.6	5.8
Chinese Taipei	2.2	3.5	3.0	3.0	3.0	2.7
China	-	-	1.1	1.2	1.3	1.3
Mexico	-	0.3	0.7	0.8	0.6	0.7
Others	-	-	-	-	-	-

Net Import by Region APEC 19



	Mtoe					
	1980	1990	1995	1999	2000	2001
Australia	-18.3	-65.3	-88.5	-109.4	-119.6	-133.8
Brunei Darussalam	-17.4	-12.9	-14.6	-14.3	-15.3	-15.1
Canada	-11.0	-68.4	-119.2	-120.1	-124.1	-124.0
Chile	4.1	7.0	10.7	17.8	16.2	15.2
China	-18.6	-29.0	-8.4	19.6	34.5	13.5
Hong Kong, China	6.0	10.8	14.3	20.3	18.2	19.2
Indonesia	-60.7	-65.9	-85.2	-92.2	-82.4	-74.2
Japan	303.2	361.6	394.0	406.7	406.8	406.4
Korea	29.6	69.5	130.8	150.6	162.7	163.5
Malaysia	-5.0	-25.9	-28.3	-28.7	-27.4	-26.1
Mexico	-46.9	-65.7	-62.9	-71.6	-71.6	-74.1
New Zealand	4.0	2.2	2.9	3.6	3.5	3.5
Papua New Guinea	0.6	-3.7	-4.0	-3.2	-0.9	-2.1
Peru	-3.0	-0.6	1.8	2.2	3.3	2.6
Philippines	10.4	11.4	16.9	19.5	20.0	20.2
Singapore	7.1	24.0	32.3	38.8	40.4	42.1
Chinese Taipei	19.4	37.0	55.7	71.3	76.4	77.8
Thailand	12.0	18.0	32.6	33.5	34.6	37.8
United States	288.6	334.8	419.3	533.8	568.7	592.4
APEC 19	504.2	538.9	700.1	878.1	944.2	944.8

Primary Energy Supply