

Better Data – Better Decisions

JODI-Oil Data in Participating Countries

Yui Torikata

Energy Analyst, IEF

Assessment approach

Participation assessment

Participation assessments are prepared two months after the close of the respective assessment period.

To maintain comparability we do not revise past assessments.

Remark on timeliness

May 2019 JODI data update (data up to March 2019) was used for this assessment.

Remark on Completeness

Completeness is reviewed based on the Extended JODI-Oil format.

Country: Australia

Participation status

Participation assessment

	January- June 2018	July- December 2017	January- June 2017
Australia	  	  	  

Remark on timeliness

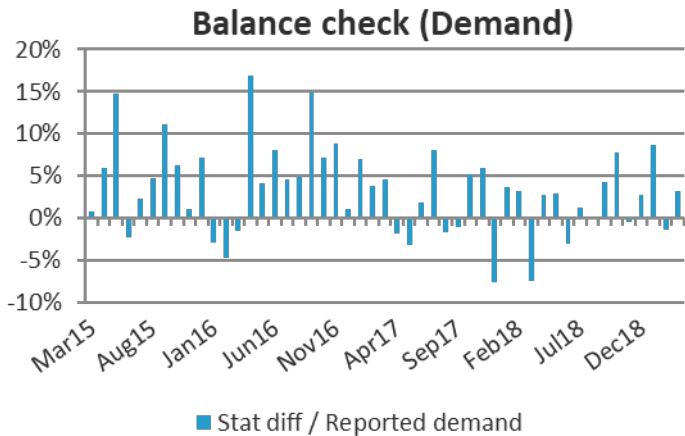
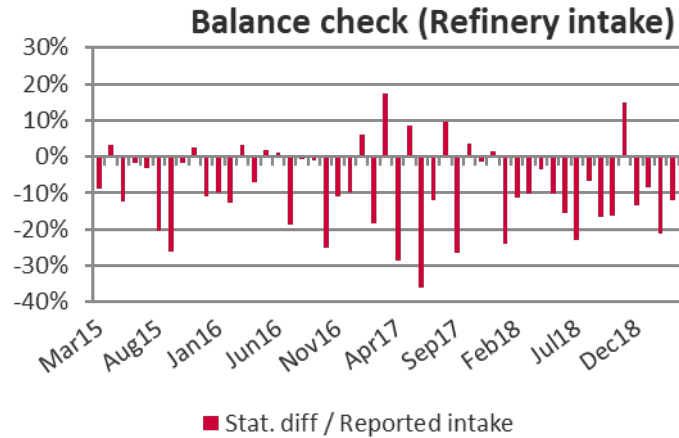
Data is available up to March 2019

Remark on completeness

- Complete data set available

Country: Australia

Flow: Balance



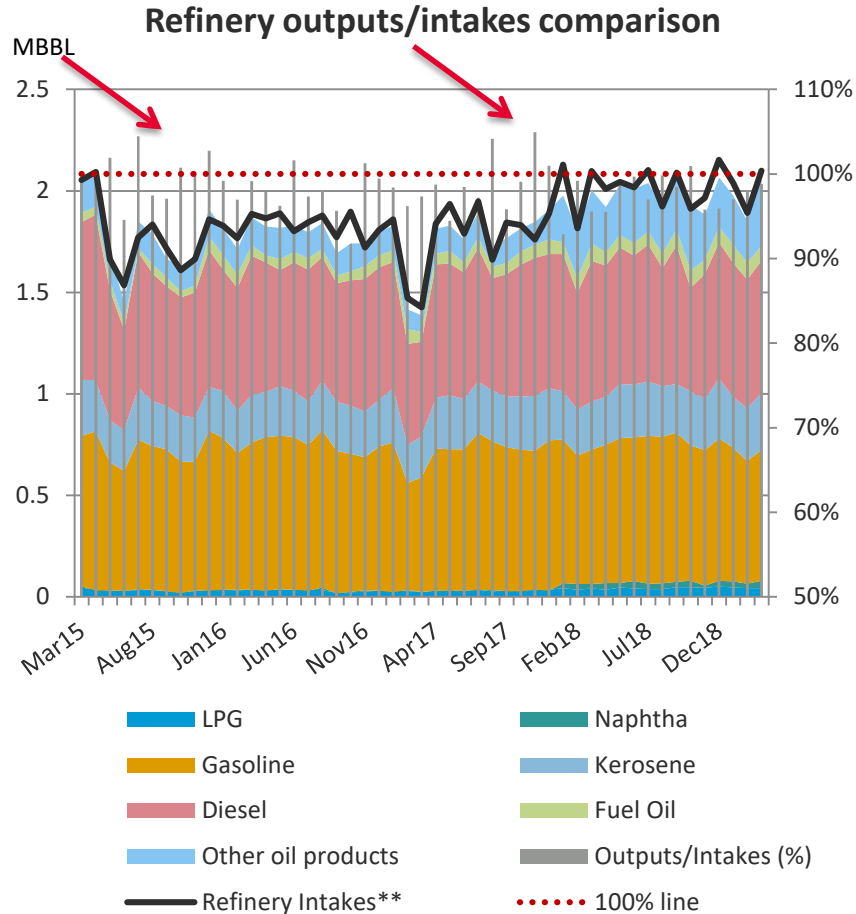
Observation:

Statistical difference above 10%

Calculated refinery intake < reported
Calculated demand > reported

Country: Australia

Data: Refinery



Observation:

Occasionally refinery yield above 100%

Country: Brunei

Participation status

Participation assessment

	January- June 2018	July- December 2017	January- June 2017
Brunei	  	  	  

Remark on timeliness

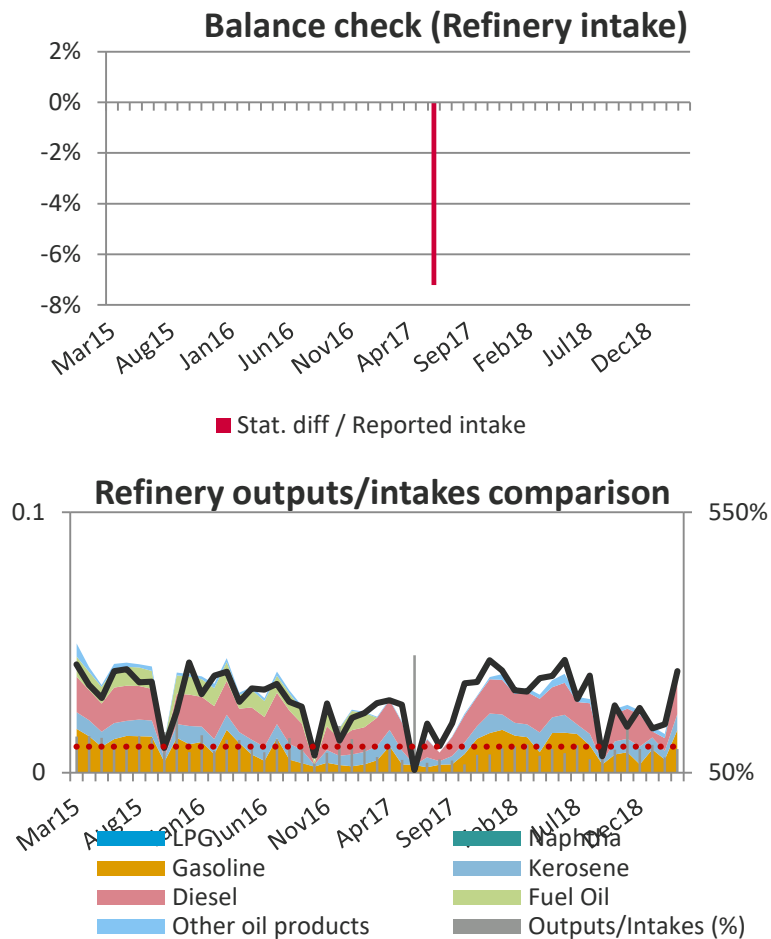
Data is available up to March 2019

Remark on completeness

- Complete data set available

Country: Brunei

Data: Balance / Refinery



Observation:

It seems that a refinery maintenance resulting high yield and exceptional statistical difference in June 2017.

Country: China

Participation status

Participation assessment

	January- June 2018	July- December 2017	January- June 2017
China	  	  	  

Remark on timeliness

Data up to August 2018

Remark on completeness

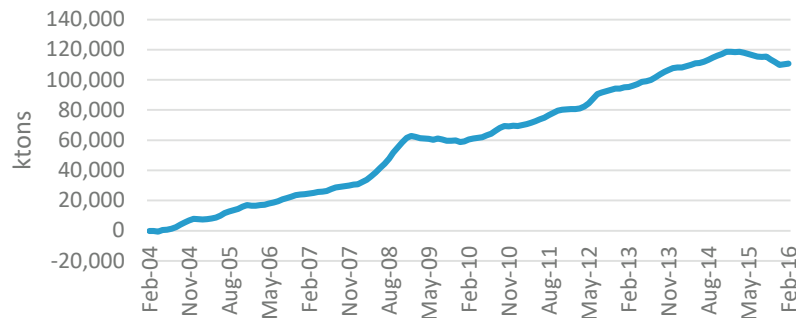
Some Naphtha data are available.

No closing stock level data. Stock change data reporting has stopped since August 2018.

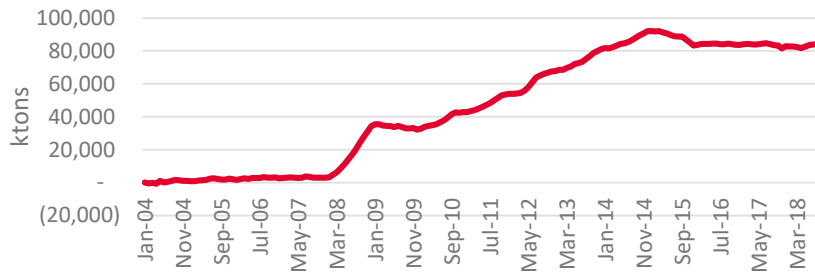
Country: China

Flow: Stock

Cumulative Chinese crude oil stock change
(Dec 2003 = 0 kton)



Cumulative Chinese crude oil stock change
(Dec 2003 = 0 kton)



Observation during the Beijing workshop (2016):

Cumulative crude oil stock change to date stands at some 110,000 ktons.

To give an idea of scale, this is roughly double the volume of crude oil stocks held by Japan.

Clarification and actions:

Stock change reported by NBS is calculated as:

stock as of the end of current month
minus
stock at the end of last year

From April, Stock Change will be calculated to align with the JODI definition as:

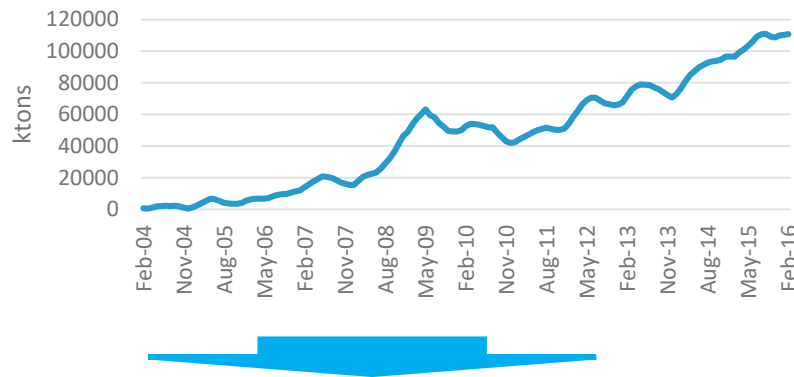
stock as of the end of current month
minus
stock at the end of previous month

APEC recalculated stock change based on this information and sent the recalculated data to NBS for review and confirmation.

Country: China

Flow: Stock

Cumulative Chinese total oil products stock change (Dec 2013 = 0 kton)



Cumulative Chinese total oil products stock change (Dec 2013 = 0 kton)



Observation during the Beijing workshop (2016):

Cumulative total oil products stock change to date stands at some 110,000 ktons.

By comparison, the US total oil products stock levels currently stands at 87,000 ktons.

Clarification and actions:

Stock change reported by NBS is calculated as:

stock as of the end of current month
minus
stock at the end of last year

From April, Stock Change will be calculated to align with the JODI definition as:

stock as of the end of current month
minus
stock at the end of previous month

APEC recalculated stock change based on this information and sent the recalculated data to NBS for review and confirmation.

Country: Hong Kong

Participation status

Participation assessment

	January- June 2018	July- December 2017	January- June 2017
Hong Kong	  	  	  

Remark on timeliness

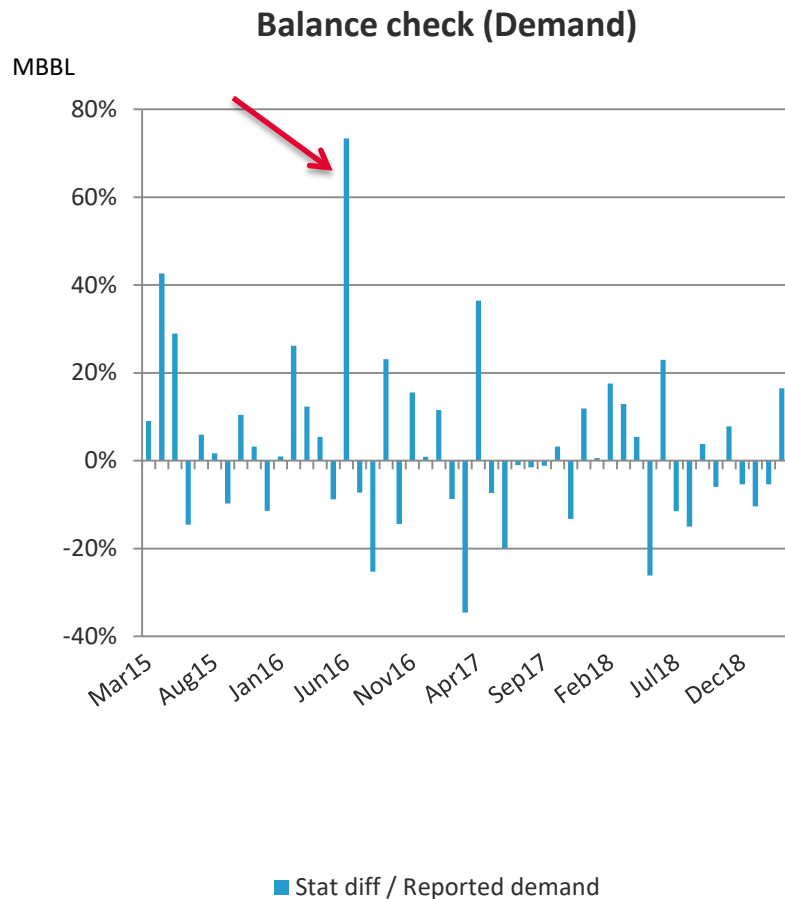
Data is available up to March 2019

Remark on completeness

- Some Jet kerosene data available

Country: Hong Kong

Data: Balance



Observation:

Occasionally large statistical differences

Maybe trade statistics and demand data do not match.

Country: Indonesia

Participation status

Participation assessment

	January- June 2018	July- December 2017	January- June 2017
Indonesia	  	  	  

Remark on timeliness

Data is available up to November 2018

Remark on completeness

- Some Other (primary), Naphtha and Jet kerosene data available

Country: Indonesia

Data: Negative production

Naphtha	Feb16	Mar16	Apr16
Refinery output	-5.167	-51.06	-1.494

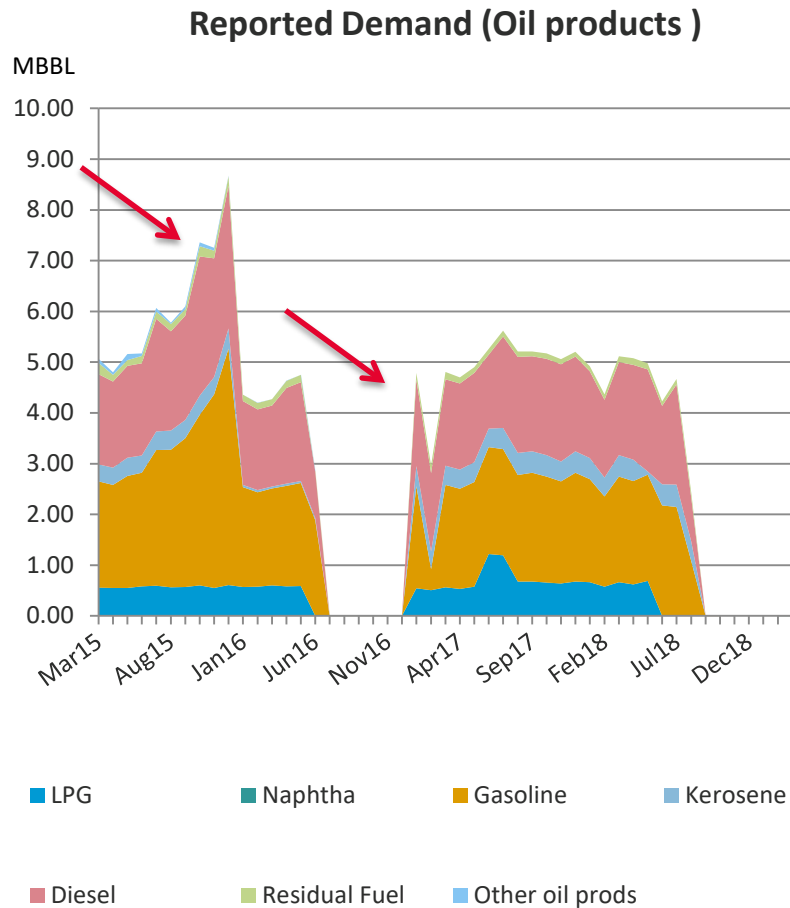
Other (Primary)	Jan17	Feb17	Mar17	Apr17	May17	Jun17	Jul17	Aug17	Sep17	Oct17	Nov17	Dec17	Jan18	Feb18	Mar18	Apr18	May18	Jun18	Jul18	Aug18	Sep18	Oct18	Nov18
Production	-11.12						-88.48	-85.68	-90.93	-48.33	-122.6	-75.55		-81.78			-173.3						-1077

Observation:

Negative production of Naphtha and Other (Primary)

Country: Indonesia

Data: Demand



Observation:

In general, missing data between Jul-Dec 2016.

The large spike of gasoline demand toward Dec 2015.

Country: Korea

Participation status

Participation assessment

	January- June 2018	July- December 2017	January- June 2017
Korea	  	  	  

Remark on timeliness

Data up to March 2019

Remark on completeness

Complete data set available

Country: Malaysia

Participation status

Participation assessment

	January- June 2018	July- December 2017	January- June 2017
Malaysia	  	  	  

Remark on timeliness

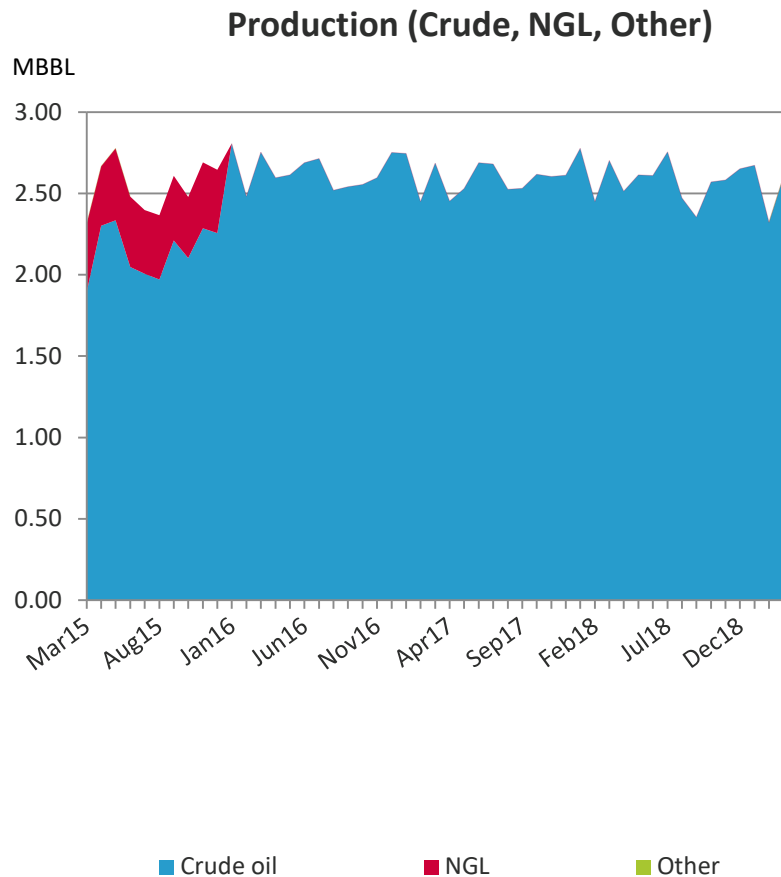
Data is available up to March 2019

Remark on completeness

- Some Naphtha data are available.
- No stock and products demand data

Country: Malaysia

Data: Production

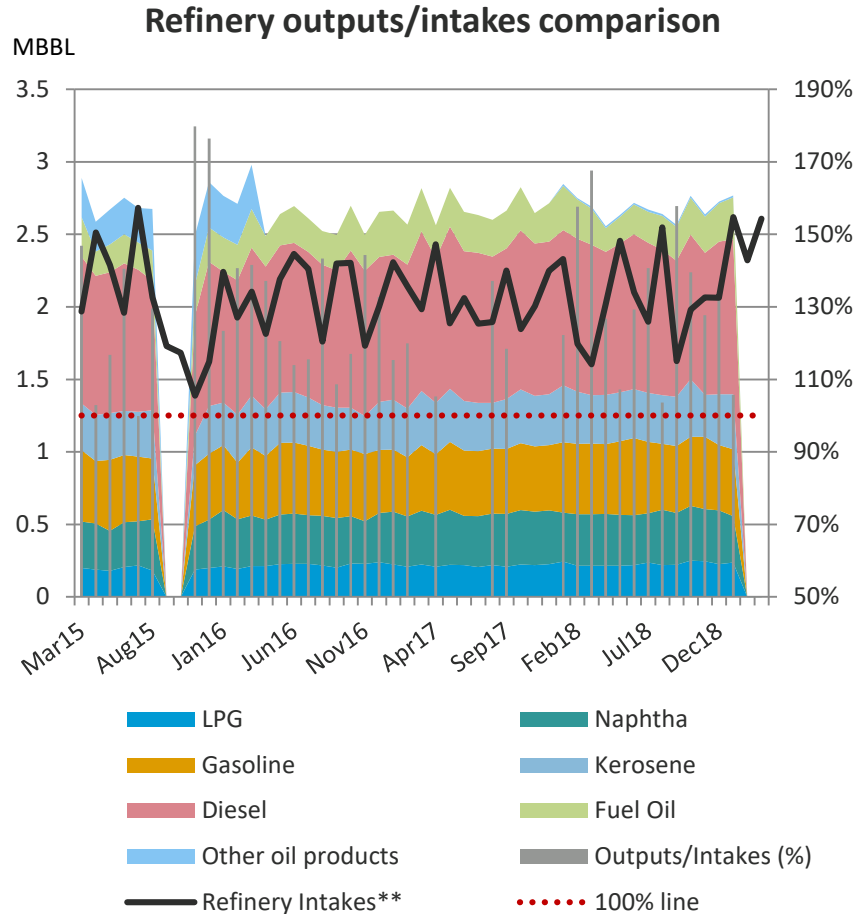


Observation:

NGL production data stopped as of December 2015 (data began in Sep 2008)

Country: Malaysia

Data: Refinery



Observation:

It is clear that some inputs (ie NGL) are missing.

Country: New Zealand

Participation status

Participation assessment

	January- June 2018	July- December 2017	January- June 2017
New Zealand	  	  	  

Remark on timeliness

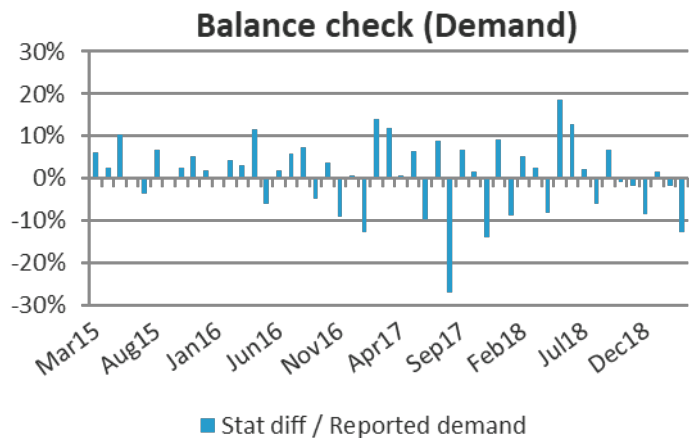
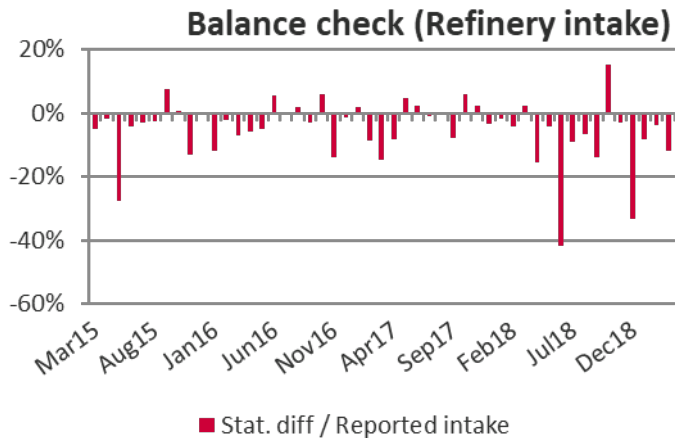
Data is available up to March 2019

Remark on completeness

- Fairly complete data set in extended format
- Supply data of Other (Primary) seem missing

Country: New Zealand

Flow: Balance



Observation:










Statistical difference occasionally above 10%

Calculated refinery intake < reported
Calculated demand > reported

Country: Papua New Guinea

Participation status

Participation assessment

	January- June 2018	July-December 2017	January- June 2017
Papua New Guinea	  	  	  

Remark on timeliness

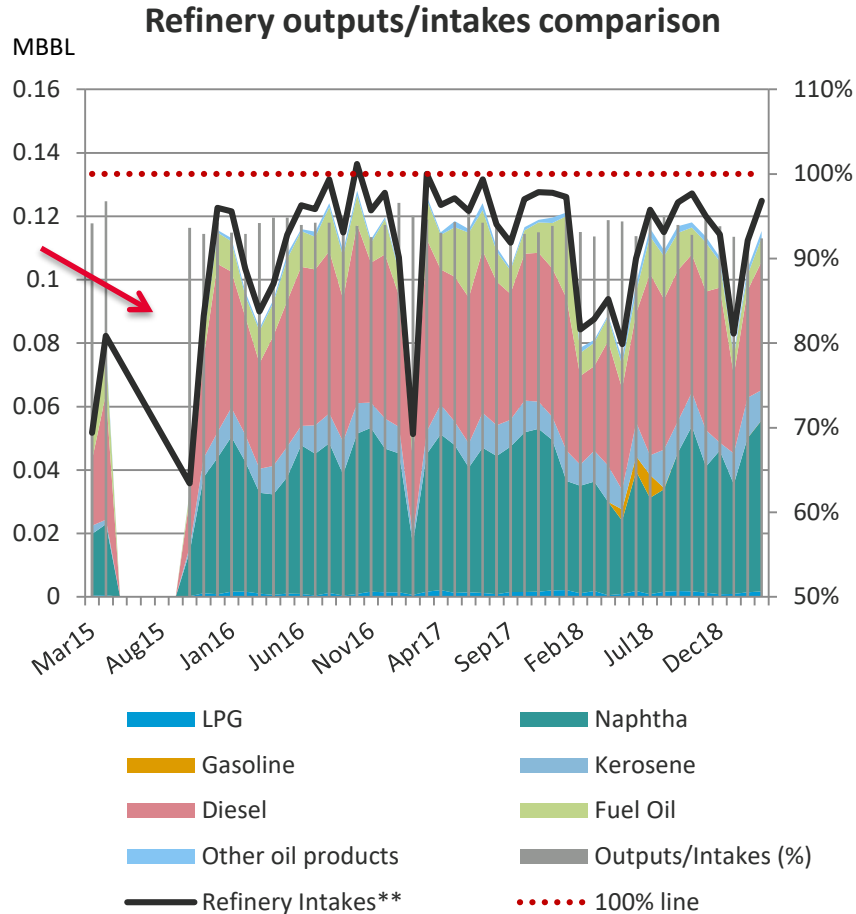
Data is available up to March 2019

Remark on completeness

- Complete Naphtha data available

Country: Papua New Guinea

Data: Refinery



Observation:

Refinery shutdown?

Country: Philippines

Participation status

Participation assessment

	January- June 2018	July- December 2017	January- June 2017
Philippines	  	  	  

Remark on timeliness

Data is available up to January 2019

Remark on completeness

- Complete Naphtha data available
- Occasional data missing

Country: Philippines

Data: Missing Data

PHILIPP-TONS	PHILIPP-TONS	Apr16	May16	Jun16	Jul16	Aug16
Kerosenes	Refinery output	67.688	0	100.58	0	112.04
	Receipts	0	0	0	0	0
	Imports	93.288	0	86.025	0	68.096
	Exports	0	0	0	0	0
	Products transferred	0	0	0	0	0
	Interproduct transfers	0	0	0	0	0
	Stock change	13.908	0	20.347	0	12.105
	Statistical difference	-21.634	0	40.566	0	58.657
	Demand	168.7	0	125.89	0	109.37
	Closing stocks	106.83	0	151.7	0	131.87
Jet fuel	Refinery output	0	88.882	0	98.774	0
	Receipts	0	0	0	0	0
	Imports	0	103.62	0	57.958	0
	Exports	0	0	0	0	0
	Products transferred	0	0	0	0	0
	Interproduct transfers	0	0	0	0	0
	Stock change	0	24.726	0	-31.937	0
	Statistical difference	0	37.577	0	57.524	0
	Demand	0	130.2	0	131.15	0
	Closing stocks	0	131.36	0	119.76	0
Gas/Diesel	Refinery output	243.79	0	389.59	0	372.77
	Receipts	0	0	0	0	0
	Imports	550.01	0	423.26	0	372.54
	Exports	0	0	0	0	0
	Products transferred	0	0	0	0	0
	Interproduct transfers	0	0	0	0	0
	Stock change	-82.576	0	-13.002	0	-0.2766
	Statistical difference	125.3	0	55.189	0	75.052
	Demand	751.07	0	750.66	0	670.53
	Closing stocks	442.07	0	640.97	0	582.18
Residual Fuel	Refinery output	101.88	0	81.23	0	69.691
	Receipts	0	0	0	0	0
	Imports	104.31	0	81.382	0	73.851
	Exports	0	0	79.56	0	0
	Products transferred	0	0	0	0	0
	Interproduct transfers	0	0	0	0	0
	Stock change	6.8324	0	37.047	0	36.895
	Statistical difference	29.308	0	-147.88	0	-33.069
	Demand	170.05	0	193.89	0	139.72
	Closing stocks	231.7	0	245.21	0	256.75
Other oil products	Refinery output	40.334	344.12	120.91	407.52	129.21
	Receipts	0	0	0	0	0
	Imports	11.934	525.79	8.8714	342.84	11.562
	Exports	33.411	0	43.07	0	52.37
	Products transferred	0	0	0	0	0
	Interproduct transfers	0	0	0	0	0
	Stock change	-13.021	219.21	4.4357	-60.526	0.143
	Statistical difference	17.425	-56.302	67.108	63.301	76.26
	Demand	14.452	707	15.167	747.58	11.997
	Closing stocks	25.327	676.52	47.505	602.54	58.952

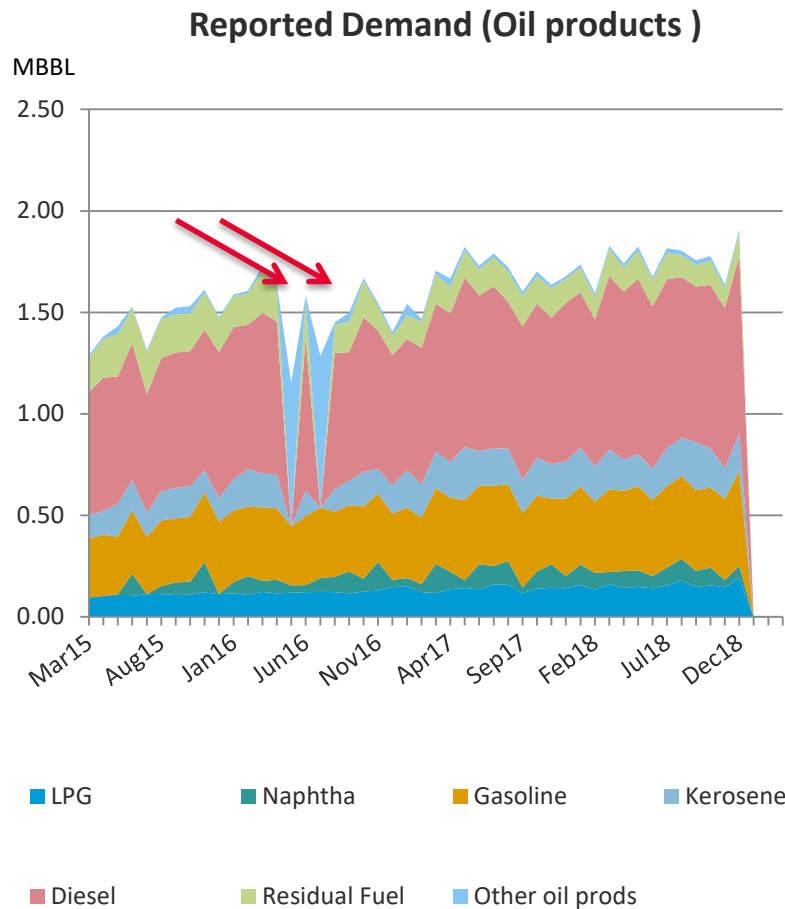
PHILIPP-TONS	PHILIPP-TONS	Jul15	Feb17	Apr18
Crude oil	Production	0	0	0
	From other sources	0	0	0
	Imports	875.419	925.49	805.291
	Exports	0	0	0
	Products transferred/Backflows	0	0	0
	Direct use	0	0	0
	Stock change	22.8225	-285.05	-213.01
	Statistical difference	0	0	0
	Refinery intake	1014.01	947.483	1037.43
	Closing stocks	640.001	641.245	624.647

Observation:

Refinery shutdown?

Country: Philippines

Data: Demand

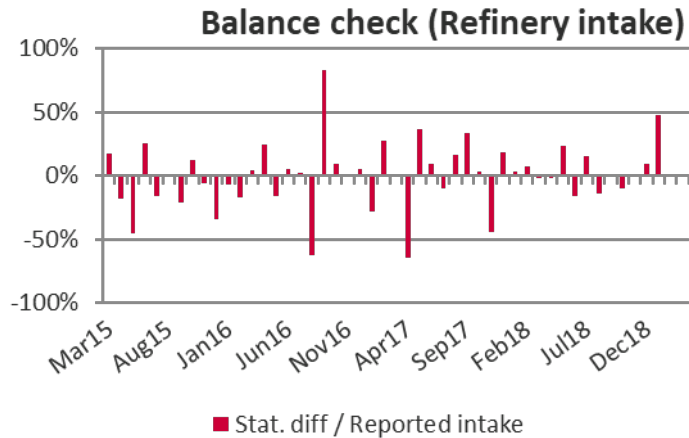


Observation:

As a result of missing data

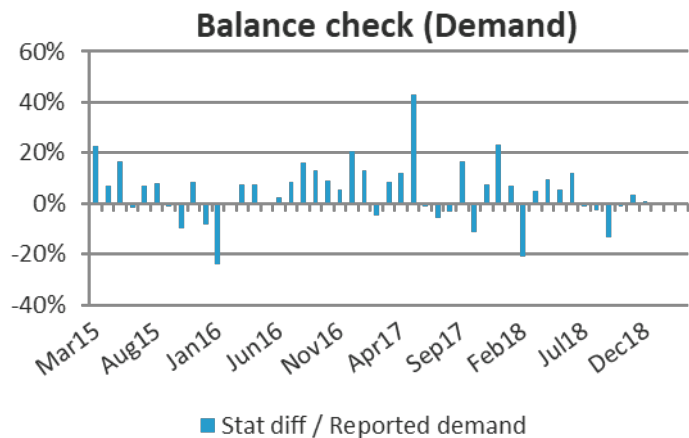
Country: Philippines

Flow: Balance



Observation:

Statistical difference occasionally above 10%



Country: Russia

Participation status

Participation assessment

	January- June 2018	July- December 2017	January- June 2017
Russia	  	  	  

Remark on timeliness

Data is available up to March 2019

Remark on completeness

- Some NGL, Naphtha and Jet Kerosene data are available
- For kerosene, only exports data are available.

Country: Russia

Data: Data

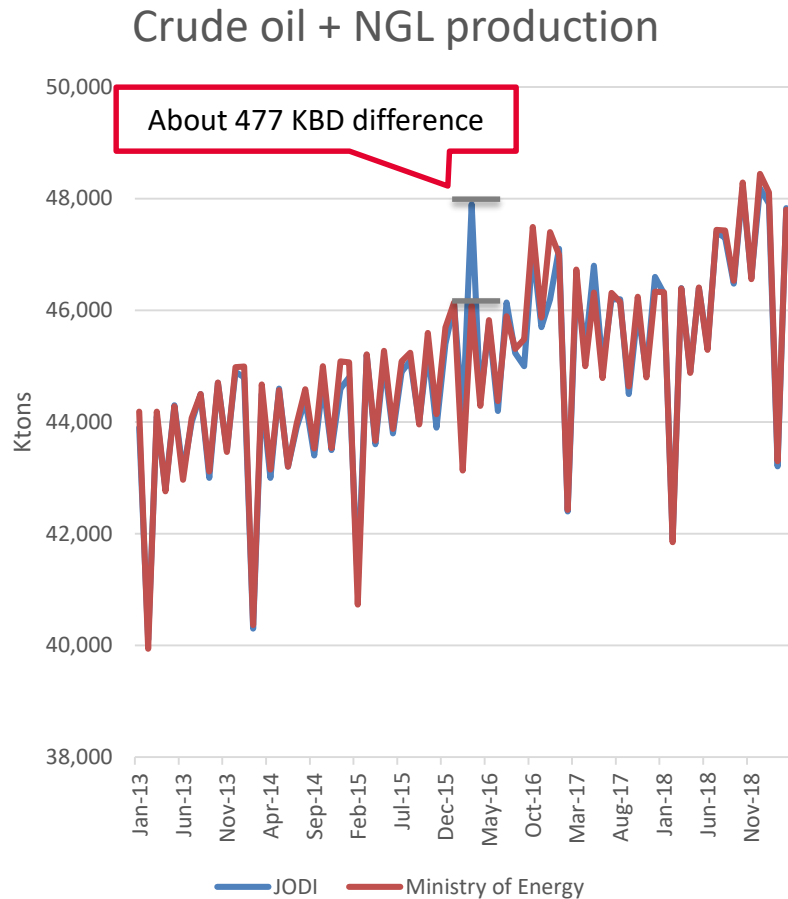
File from folder UC		RUSSIA-TONS	Jan18	Feb18	Mar18	Apr18	May18	Jun18	Jul18	Aug18	Sep18	Oct18	Nov18	Dec18	Jan19	Feb19	Mar19
Crude oil	RUSSIA-TONS																
	Production		43300	39200	43500	42200	43600	42708.3	44900	44900	43800	45300	43755.2	45203.8	44981.2	40500	44514.97
	From other sources		0	0	0	0	0	0	0	0	0	0	0	0	0	0	0
	Imports		0	0	0	0	0	0	0	0	0	0	0	0	0	0	0
	Exports		22900	19200	19200	23900	20200	20000	20900	21600	21800	22200	23100	23300	21000	20600	0
	Products transferred/Backflows		0	0	0	0	0	0	0	0	0	0	0	0	0	0	0
	Direct use		0	0	0	0	0	0	0	0	0	0	0	0	0	0	0
	Stock change		0	0	0	0	0	0	0	0	0	0	0	0	0	0	0
	Statistical difference		0	0	0	0	0	0	0	0	0	0	0	0	0	0	0
	Refinery intake		24600	22400	24500	22800	24500	24300	25500	24700	23898.8	23800	24153.7	25425.6	25111.1	22706.8	23718.15
Closing stocks		0	0	0	0	0	0	0	0	0	0	0	0	0	0	0	
NGL	Production		3000	2700	2900	2700	2800	2636.76	2500	2400	2677.8	2900	2838.6	2978.58	2930.94	2707.01	3315.984
	From other sources		0	0	0	0	0	0	0	0	0	0	0	0	0	0	0
	Imports		100	100	100	100	100	100	100	100	30	0	0	0	0	0	0
	Exports		0	0	0	0	0	0	0	100	0	200	0	200	400	0	0
	Products transferred/Backflows		0	0	0	0	0	0	0	0	0	0	0	0	0	0	0
	Direct use		0	0	0	0	0	0	0	0	0	0	0	0	0	0	0
	Stock change		0	0	0	0	0	0	0	0	0	0	0	0	0	0	0
	Statistical difference		0	0	0	0	0	0	0	0	0	0	0	0	0	0	0
	Refinery intake		0	0	0	0	0	0	0	0	0	0	0	0	0	0	0
	Closing stocks		0	0	0	0	0	0	0	0	0	0	0	0	0	0	0

Observation:

Granularity under 100 ktons became available as of Nov 2018.

Country: Russia

Flow: Production



Observation during Moscow Workshop (2016):

Apparent discrepancies between JODI data and data from Ministry of Energy.

*Russian crude oil production data in accordance with JODI-Oil definition is available only as of January 2012

Country: Chinese Taipei

Participation status

Participation assessment

	January- June 2018	July-December 2017	January- June 2017
Chinese Taipei	  	  	  

Remark on timeliness

Data is available up to March 2019

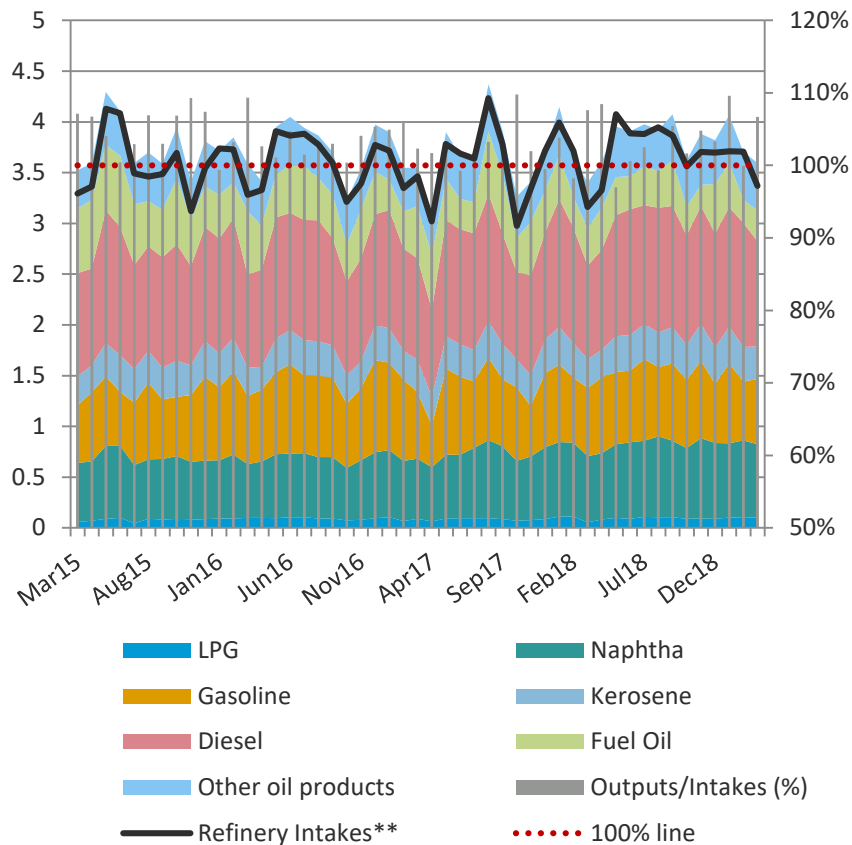
Remark on completeness

- Complete data set in the extended format.

Country: Chinese Taipei

Flow: Refinery

Refinery outputs/intakes comparison



Observation:

Fluctuating refinery yield between 97 to 110%.

Due to measurement timing?

Country: United States

Participation status

Participation assessment

	January- June 2018	July-December 2017	January- June 2017
United States	  	  	  

Remark on timeliness

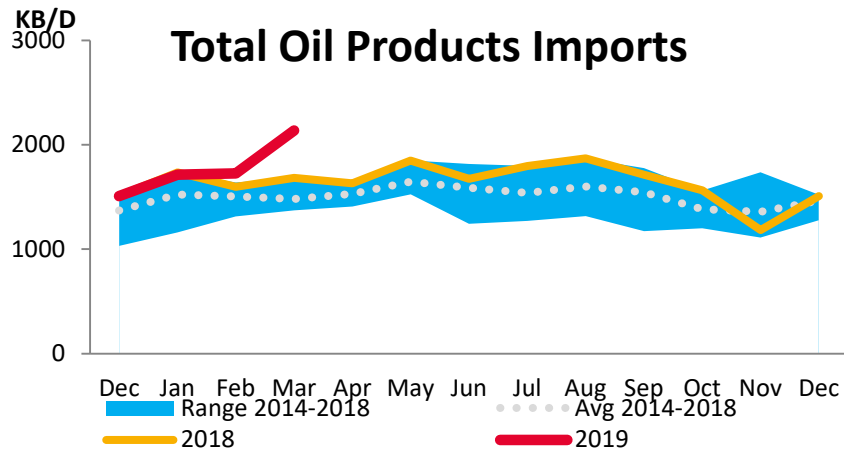
Data is available up to March 2019

Remark on completeness

- Complete data set in the extended format
- LPG data represents only outputs from refinery portion

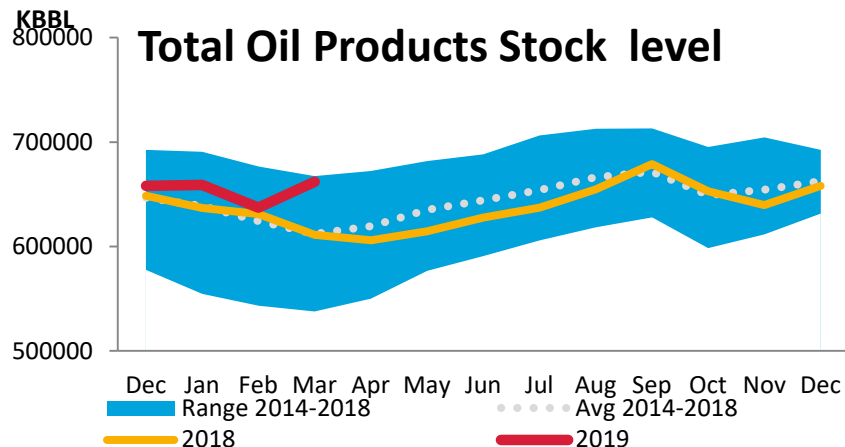
Country: USA

Flow: Products imports



Observation:

The latest month data is usually a subject to revision due to different product classification.



* Country note says...

Liquefied Petroleum Gases Demand and Closing Stocks - Most recent month's information include data for propane only, butane data are not included.

Country: Viet Nam

Participation status

Participation assessment

Viet Nam stopped data reporting as of September 2010

Remark on completeness

- Previously Viet Nam reported some additional data set in extended format including Jet Kerosene.



www.jodidata.org

