



Table of content

- 1- Energy Imports and Exports
- 2- Energy transformation
- 3- Data collection
- 4- Completeness of data
- 5- Additional Sharing





1-Energy Imports and Exports

➤ Minor Indigenous production:

Renewable energy

➤ Mainly Import and Exports, which includes:



- Coal Products (e.g. Wood charcoal, steam coal);

- Oil Products (e.g. Motor Gasoline, naphtha);



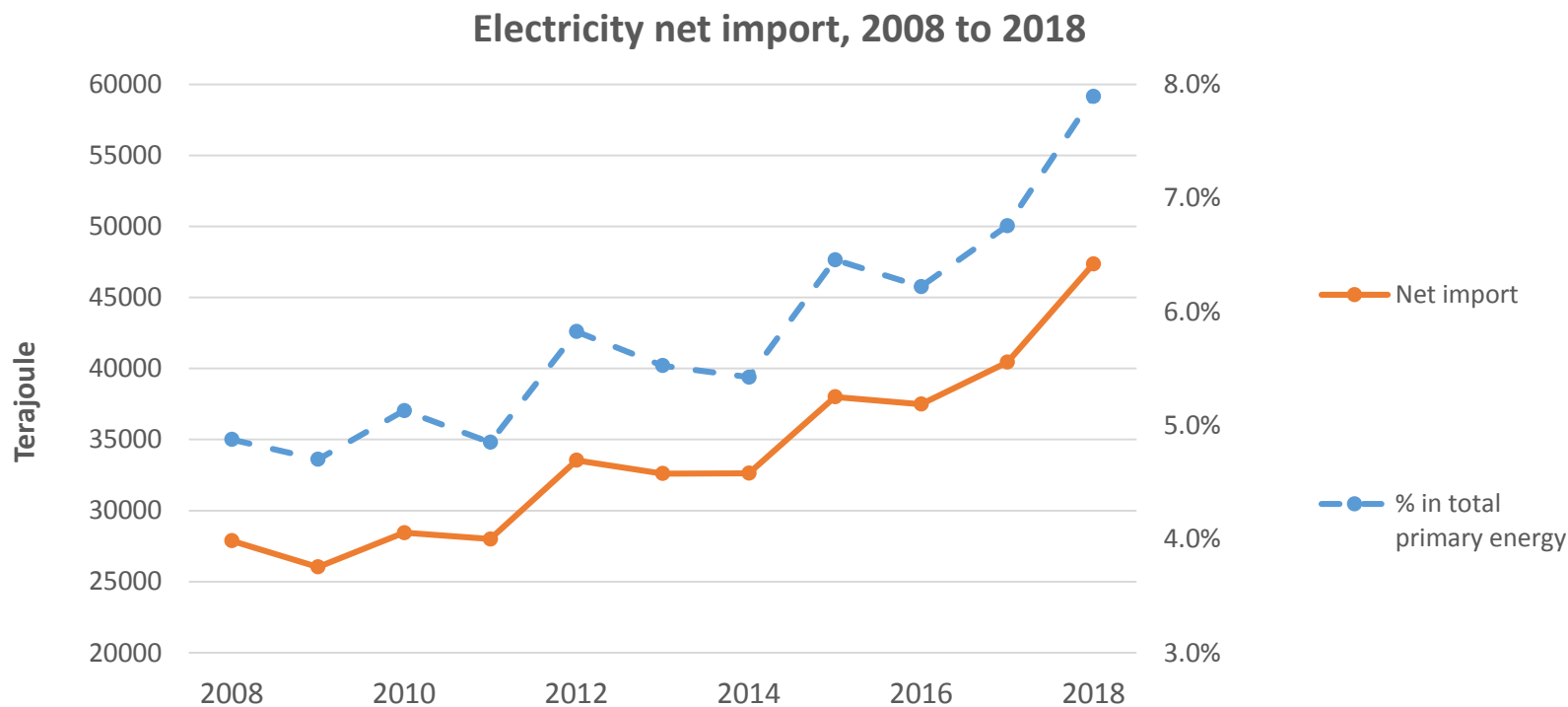
- Natural Gas; and



- Electricity

1-Energy Imports and Exports - Electricity

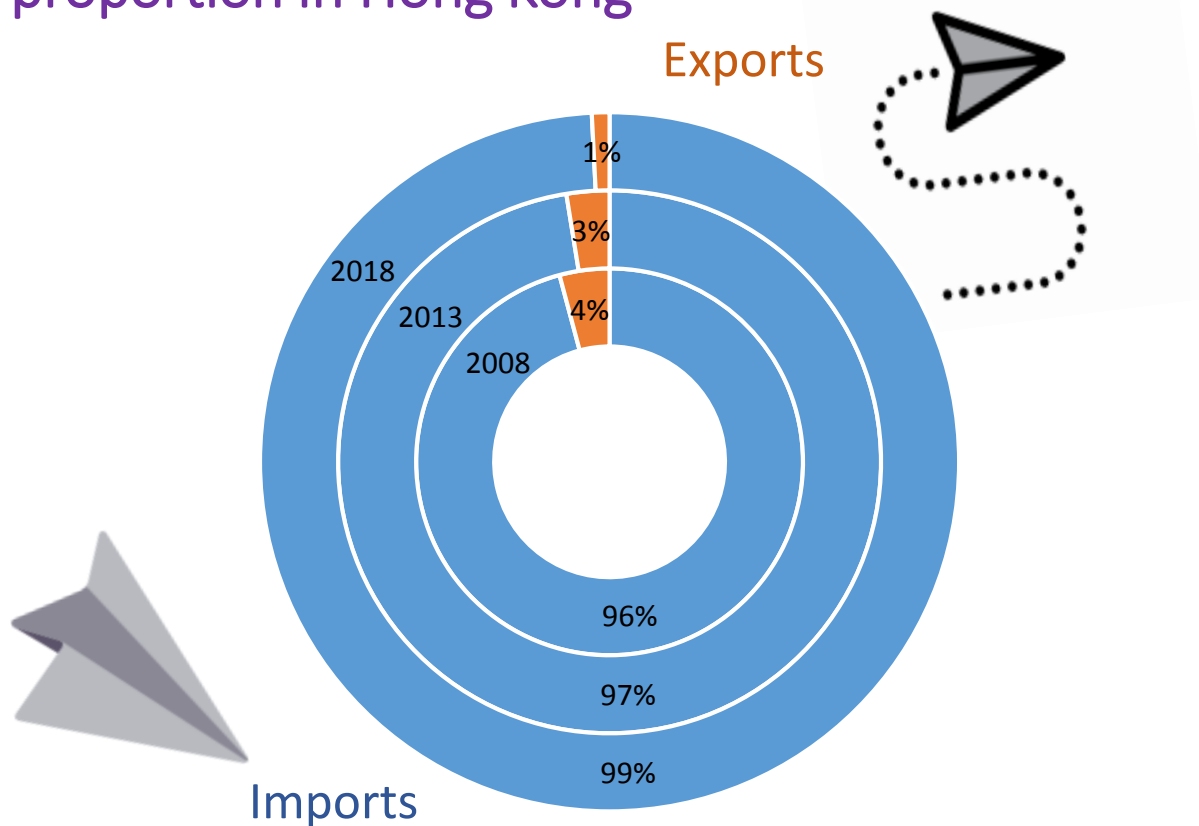
- Between 2008 to 2018, the trend of net electricity imported is in-line with that of its percentage in total primary energy



Source: Hong Kong C&SD Energy Statistics Annual Reports

1-Energy Imports and Exports

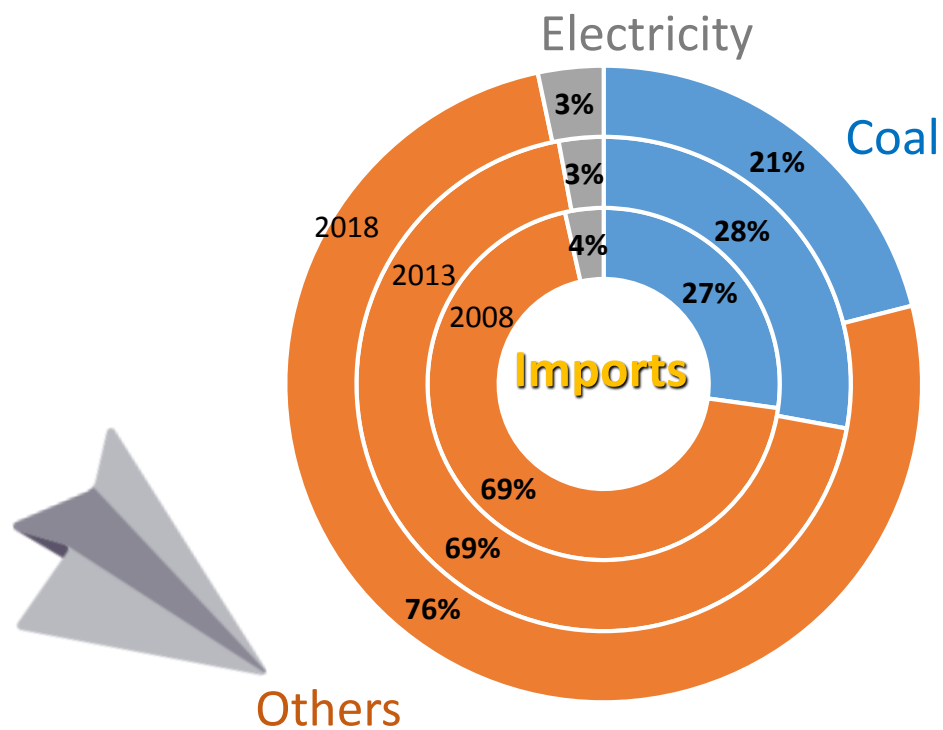
- Between 2008 to 2018 the Energy Imports has taken up a large proportion in Hong Kong



Source: Hong Kong C&SD Energy Statistics Annual Reports

1-Energy Imports and Exports

- Energy Imports (Majority) and Exports (Minority)
- Imports : Around 95% from Coal and Others



Source: Hong Kong C&SD Energy Statistics Annual Reports



2- Energy transformation



- Except direct import, **Electricity** and **Town Gas** is produced through transformation processes;
- No refineries industry;
- Town Gas is produced from natural gas, naphtha and landfill gas and Only ONE company produces the town gas in HKC:-
“The Hong Kong and China Gas Company”
- Electricity is produced from coal, natural gas, oil and renewable sources and TWO companies produce electricity in HKC:-
“CLP Power Hong Kong Limited” & “Hong Kong Electric”.



3-Data collection



Type of data	Monthly Gas data	Monthly Oil data
Source of Data	1- Electrical and Mechanical Services Department-Gas Division	1- Electrical and Mechanical Services Department-Gas Division
	2- CLP Power Hong Kong Limited	2- Census and Statistics Department
	3- Hong Kong Electric	



4-Completeness of data



- Higher accuracy as the data come from government department and utility;
- Keep monitoring the data with government department and utility;
- Communicate with difference parties;
- Actively co-operates with international organizations to discuss energy issues; and
- Research on latest development of energy policies.



4-Completeness of data

- Improvement on completeness of the data

2018	
	Hong Kong, China
Completeness	80%
Indigenous Production	12 / 12
Imports	12 / 12
Exports	12 / 12
Stock Changes (+ or -)	12 / 12
Gross Inland deliveries (calculated)	12 / 12
Statistical Difference	
Gross Inland deliveries (observed)	0 / 12
of which: Power Generation	0 / 12
of which: Own use and losses	12 / 12
Total Stocks on National Territory- Opening	12 / 12
Total Stocks on National Territory- Closing	12 / 12

4-Completeness of data

➤ Improvement on completeness of the data

Member Economy:	HONG KONG CHINA	
Month:	January	
Year:	2019	
	Natural Gas Million m³ (at 15°C, 760 mm Hg)	Natural Gas TJ (Gross Calor. Value)
Indigenous Production	0.00	0.00
Imports	262.45	10,468.50
Exports	0.00	0.00
Stock Changes (+ or -)	0.00	0.00
Gross Inland deliveries (calculated)	262.45	10,468.50
Statistical Difference	N.A.	N.A.
Gross Inland deliveries (observed)	N.A.	N.A.
of which: Power Generation	***	***
of which: Other use and losses of the natural gas industry		
Total Stocks on National Territory- Opening	0.00	
Total Stocks on National Territory- Closing	0.00	

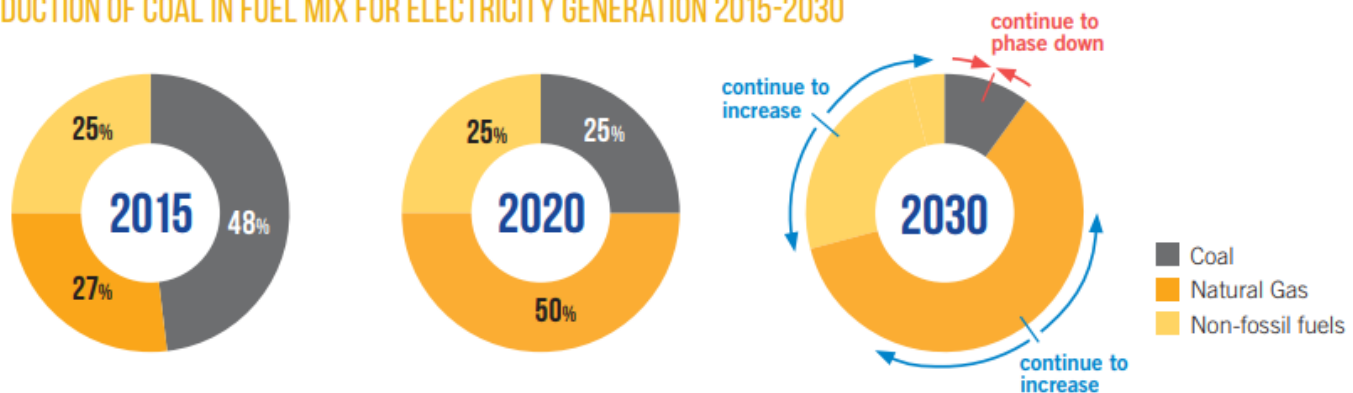
Member Economy:	HONG KONG CHINA	
Month:	February	
Year:	2019	
	Natural Gas Million m³ (at 15°C, 760 mm Hg)	Natural Gas TJ (Gross Calor. Value)
Indigenous Production	0.00	0.00
Imports	177.26	7,085.74
Exports	0.00	0.00
Stock Changes (+ or -)	0.00	0.00
Gross Inland deliveries (calculated)	177.26	7,085.74
Statistical Difference	0.00	0.00
Gross Inland deliveries (observed)	177.26	7,085.74
** of which: Power Generation	137.26	5,396.74
of which: Other usage	40.00	1,689.00
Total Stocks on National Territory- Opening	0.00	
Total Stocks on National Territory- Closing	0.00	



Additional Sharing – Transformation Target

- About 70 % of carbon emissions comes from electricity generation
- Phase down coal-fired electricity generation
- Replace with natural gas and non-fossil fuel sources

REDUCTION OF COAL IN FUEL MIX FOR ELECTRICITY GENERATION 2015-2030



Source: Hong Kong Climate Action Plan 2030+

Additional Sharing – Transformation Target

- Floating Storage and Regasification Unit (FSRU) will provide additional access to natural gas in Hong Kong water

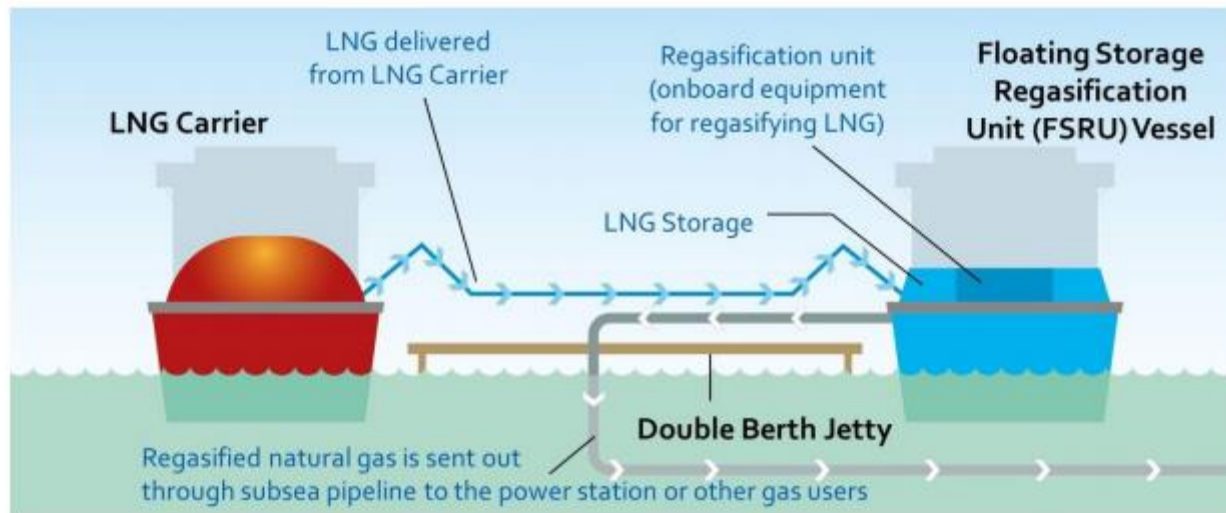


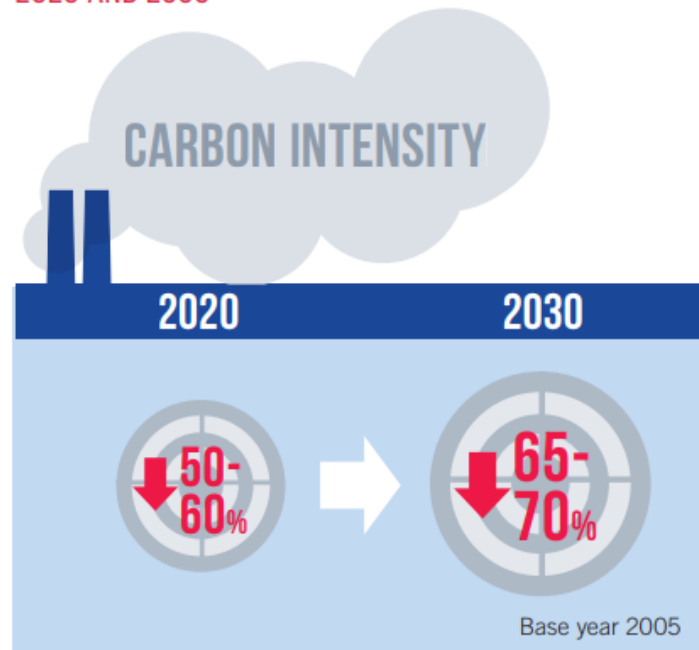
Photo source: CLP Information Kit 2018

- Come into operation by 2020 the earliest

Additional Sharing – Transformation Target

- Carbon intensity target of 50 - 60% reduction by 2020 (65% - 70% by 2030) using 2005 as base

HONG KONG'S CARBON INTENSITY TARGETS FOR 2020 AND 2030



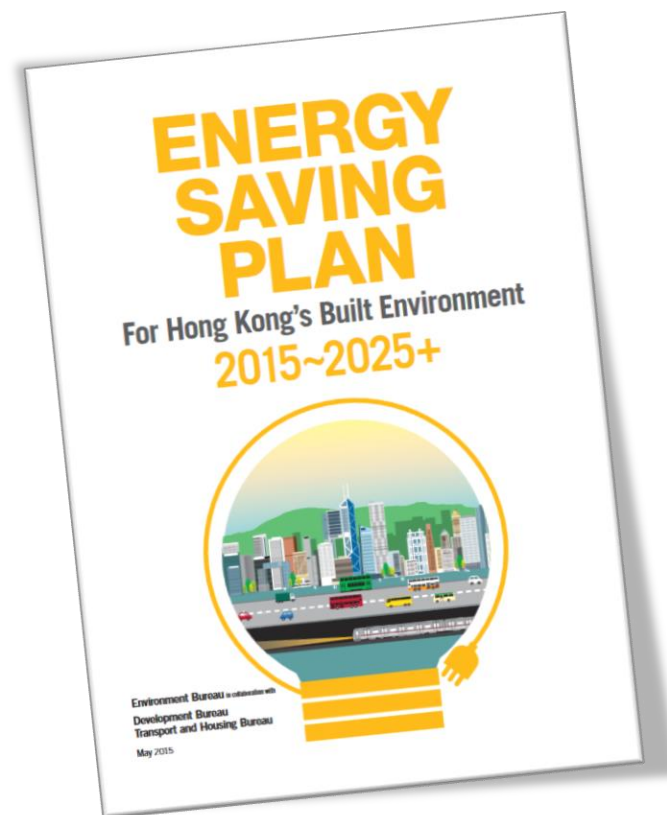
Source: Hong Kong Climate Action Plan 2030+



Additional Sharing – EI Target

Energy Saving Plan for HK 2015~2025+

Our target of reducing Hong Kong's energy intensity by **40%** by 2025 using 2005 as the base.





Thank You !